

# londonist

DMC

## 2024 - 2025

### LONDONIST RESIDENCES



[www.londonist.co.uk](http://www.londonist.co.uk)



- iQ
- Yugo
- Chapter
- Axo
- Mezzino
- Collegiate
- Londonist
- Vita
- YourTribe
- Unite Students
- Prestige Student Living
- Downing Students
- Home For Students

## TABLE OF CONTENTS

|  |       |
|--|-------|
| Axo Students – Islington II Residence  | 3-4   |
| Axo Students – New Cross Residence     | 5-6   |
| Axo Students – Seven Sisters Residence | 7-8   |
| Chapter – Aldgate Residence            | 9-10  |
| Chapter – Ealing Residence             | 11-12 |
| Chapter – Highbury Residence           | 13-14 |
| Chapter – Highbury II Residence        | 15-16 |
| Chapter – Islington Residence          | 17-18 |

|   |       |
|---|-------|
| Chapter - King's Cross Residence        | 19-20 |
| Chapter - Lewisham Residence            | 21-22 |
| Chapter - Old Street Residence          | 23-24 |
| Chapter - Portobello Residence          | 25-26 |
| Chapter - South Bank Residence          | 27-28 |
| Chapter - Spitalfields Residence        | 29-30 |
| Chapter - Westminster Residence         | 31-32 |
| Chapter - White City Residence          | 33-34 |
| Collegiate - Dashwood Studios Residence | 35-36 |
| Downing Students - The Lyra Residence   | 37-38 |
| Home for Students - Hawley Crescent     | 39-40 |
| Home for Students - Landale House       | 41-42 |
| iQ Kingston Residence                   | 43-44 |
| iQ Paris Gardens Residence              | 45-46 |
| iQ Shoreditch Residence                 | 47-48 |
| iQ Sterling Court Residence             | 49-50 |
| iQ Vega Residence                       | 51-52 |
| Londonist - Finsbury House Residence    | 53-54 |
| Londonist - West Green House            | 55-56 |
| Mezzino - Hackney Wick Park             | 57-58 |
| Prestige - Paddington Citi View         | 59-60 |
| Tribe - South Bermondsey                | 61-62 |
| Unite Students - Drapery Place          | 63-64 |
| Vita Students - Lewisham Exchange       | 65-66 |
| Yugo - Therese House                    | 67-68 |



## AXO STUDENTS – ISLINGTON II RESIDENCE

Located in Zone 2, Islington II provides students with a perfect blend of urban life and tranquillity. The residence is tailored for students who value comfort and convenience and has various en-suite rooms and studio flats.

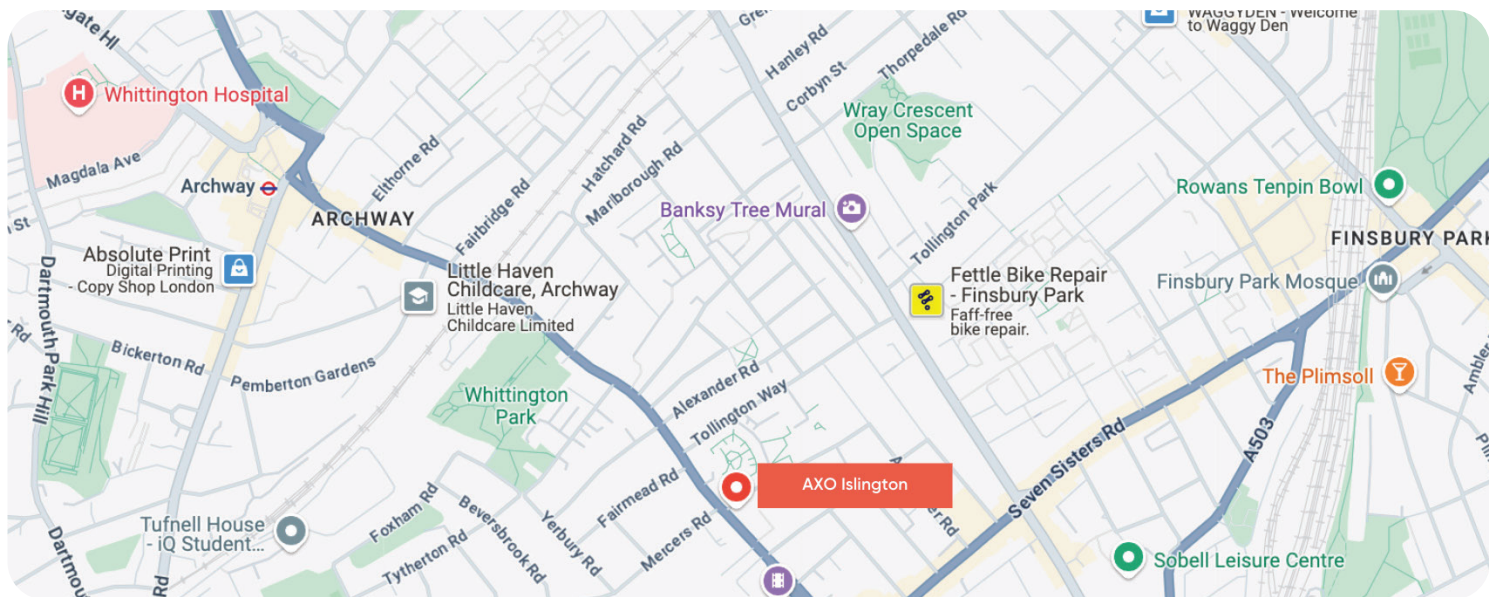
Proximity to the Emirates Stadium, Highbury Fields, and Camden Town offers both leisure and entertainment. Excellent transport links make commuting to nearby universities seamless.

### Amenities

- WiFi
- 24-hour security
- All-inclusive bills
- Entertainment facilities
- Laundry services
- CCTV surveillance

### Nearby Universities

- London Metropolitan University:** 16-minute walk
- Kaplan:** 22 minutes via bus
- UCL:** 18 minutes via tube
- University of Westminster:** 23 minutes via tube
- City, University of London:** 24 minutes via tube



**Address** : 556 Holloway Road, London, N7 6JP  
**Nearest Tube Station** : Holloway Road (Piccadilly Line)  
**Nearest Train Line** : Upper Holloway - Overground

## Nearby Attractions & Key Locations

**Emirates Stadium:** 0.4 miles, home to Arsenal FC, offering major sporting events and tours.

**Highbury Fields:** 1 mile, a large park with tennis courts, a playground, and green spaces for relaxation.

**Nags Head Shopping Centre:** 0.4 miles, featuring various shops, supermarkets like Morrisons and Waitrose, and dining options.

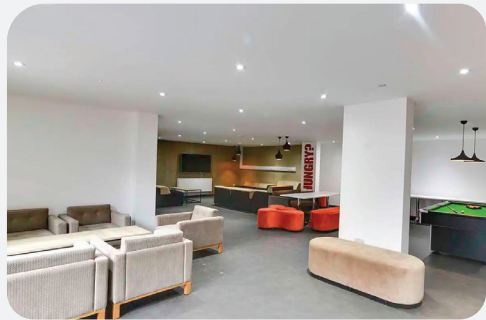
**Gillespie Park Nature Reserve:** 0.8 miles, a peaceful nature reserve with gardens and wildlife habitats.

**Islington Assembly Hall:** 1.1 miles, a popular venue for live music and entertainment events.

## Room Options

**Bronze Studio:** This compact 23m<sup>2</sup> studio has a 4ft double bed and is ideal for a comfortable and private living space.

**Silver Studio:** Spacious 30m<sup>2</sup> studio featuring a 4ft double bed, offering extra room for studying and relaxing.



## AXO STUDENTS – NEW CROSS RESIDENCE

Discover the dynamic energy of South East London at our New Cross residence, a modern and stylish development that mirrors the creative buzz of Shoreditch. This residence offers spacious en-suite and studio rooms with excellent communal facilities.

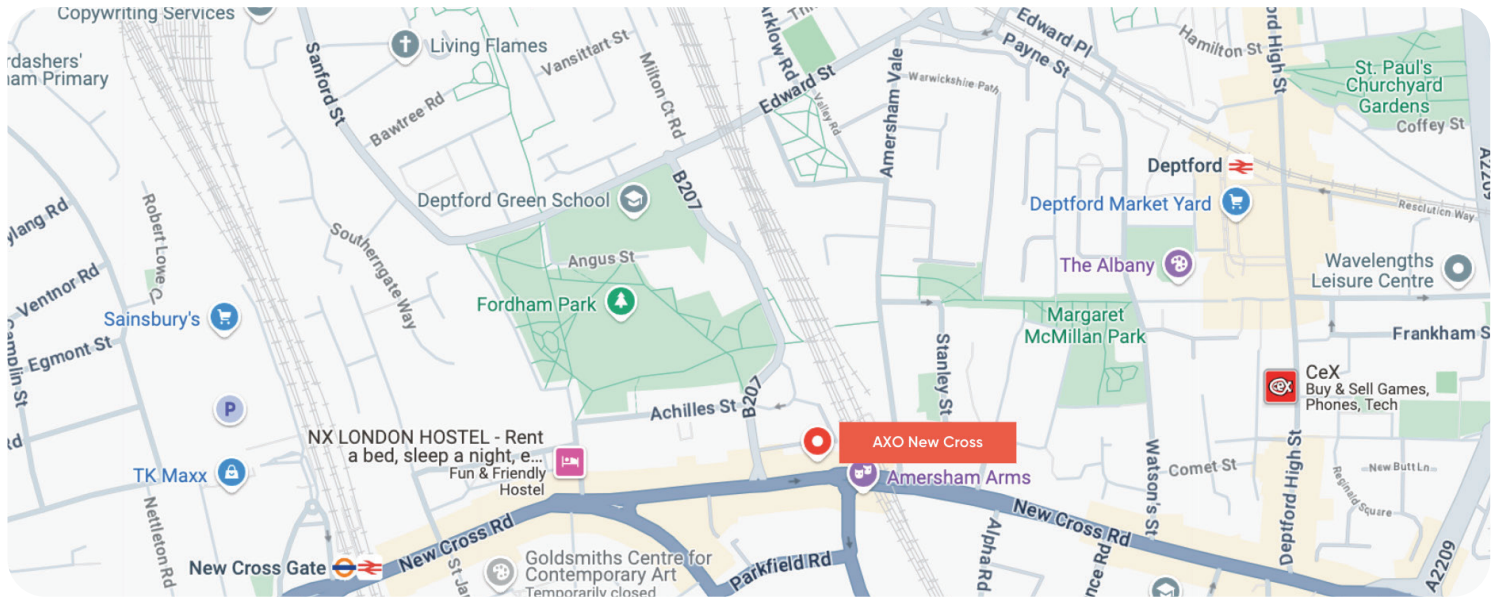
Located just a two-minute walk from New Cross Station, it provides unbeatable convenience and connectivity, especially for Goldsmiths University students.

### Amenities

- WiFi
- 24-hour security
- All-inclusive bills
- Common areas
- Wheelchair access
- Social spaces
- Bike storage

### Nearby Universities

- Goldsmiths University:** 4-minute walk
- London South Bank University:** 23-minute journey
- Greenwich University:** 12-minute journey
- University of the Arts, Camberwell:** 20-minute journey
- King’s College London:** 35-minute journey



**Address** : 403-407 New Cross Road, London, SE14 6LA  
**Nearest Tube Station** : Canada Water (Jubilee Line)  
**Nearest Train Line** : New Cross

## Nearby Attractions & Key Locations

**Telegraph Hill Park:** 0.3 miles away, a beautiful park offering stunning city views, tennis courts, and a community garden.

**Deptford Market Yard:** 0.4 miles, a market space with boutique shops, cafes, and regular events.

**The Albany Theatre:** 0.5 miles away, a creative arts venue offering a variety of performances and community events.

**The Amersham Arms & The Marquis of Granby:** Popular local bars known for live music, comedy nights, and a lively student atmosphere.

## Room Options

**Bronze Studio:** A cosy 16m<sup>2</sup> studio with a 4ft double bed, perfect for students seeking a comfortable, private space.

**Silver Studio:** Identical in size to the Bronze Studio, this room offers a stylish living environment with a 4-foot double bed.

**Platinum Studio:** A spacious 20m<sup>2</sup> studio with a 4ft double bed, offering more room to relax and study.



## AXO STUDENTS – SEVEN SISTERS RESIDENCE

AXO Seven Sisters offers luxurious student accommodation in a vibrant area 9 minutes from Tottenham Hale Station. With easy access to central London via the Victoria Line, residents enjoy a convenient location surrounded by shops, dining, and nightlife.

The residence features modern en-suite studios, high-speed WiFi, communal study rooms, a rooftop terrace, an on-site gym, and 24-hour security.

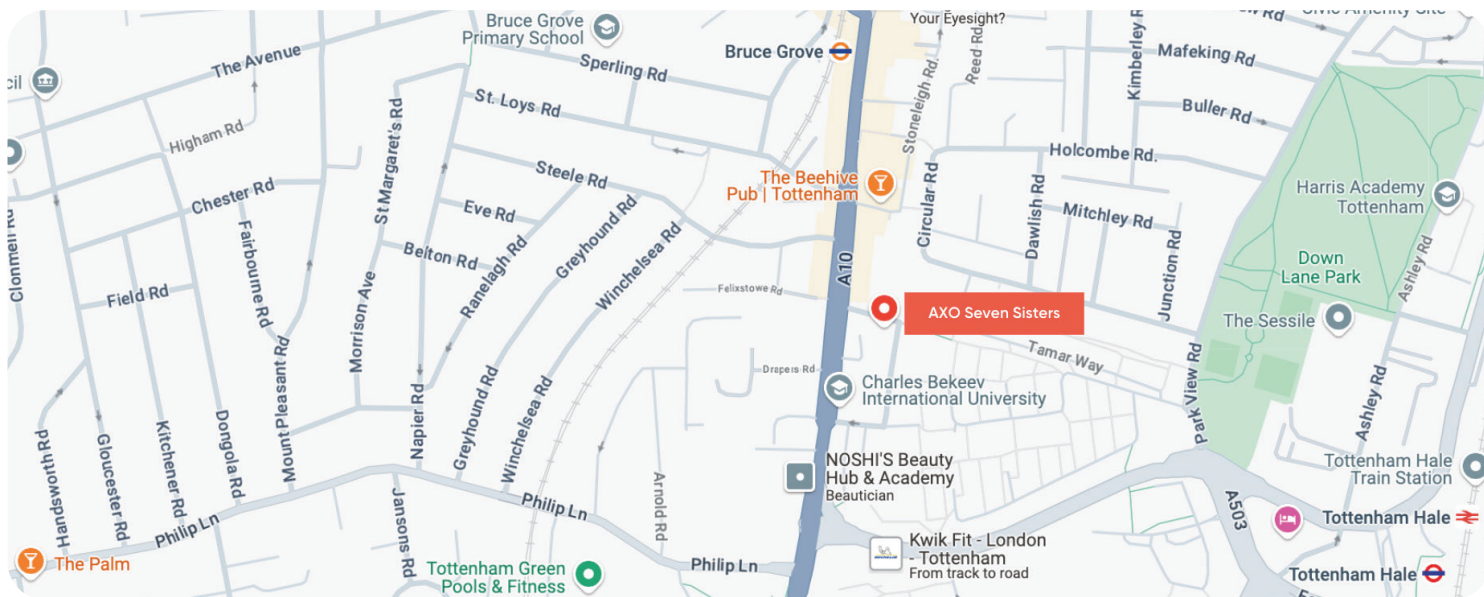
### Amenities

- WiFi
- Laundry facilities
- All-inclusive bills
- Gym
- Table tennis
- Games room
- Social spaces
- Private study room
- Communal study spaces
- Post box
- CCTV surveillance

### Nearby Universities

- Middlesex University:** 20 minutes via public transport
- University College London (UCL):** 28 minutes via public transport
- King's College London:** 35 minutes via tube
- City, University of London:** 30 minutes via tube
- London Metropolitan University:** 22 minutes via public transport





**Address** : 2 Chesnut Rd, London, N17 9EN  
**Nearest Tube Station** : Tottenham Hale (Victoria Line)  
**Nearest Train Line** : Tottenham Hale

### Nearby Attractions & Key Locations

**The Beehive Pub:** A popular local pub just a few minutes away.

**The Ship & The Garden House Café:** Quaint spots nearby offering great food and a cosy atmosphere.

**Tottenham Green Leisure Centre:** A well-equipped fitness centre with swimming pools and exercise classes is nearby.

**Tottenham Marshes:** An ample open space for outdoor activities, just a short walk from the residence.

**Bruce Castle Museum:** A historic site offering cultural exhibitions, located a short distance from the residence.

### Room Options

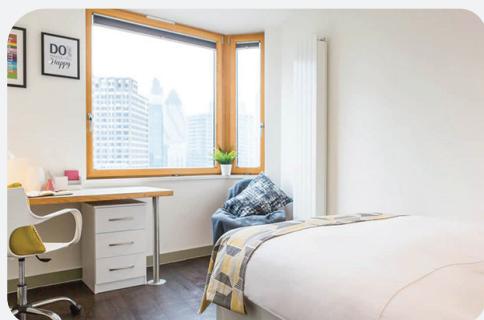
**Bronze Studio (Single Bed):** A cosy 15m<sup>2</sup> studio with a single bed, perfect for solo living.

**Bronze Studio (4ft Double Bed):** This studio is similar in size but has a 4ft double bed for extra comfort.

**Bronze Accessible Studio:** This studio is designed with accessibility in mind and features a 4-foot double bed.

**Silver Studio:** Offers a comfortable living space with a 4ft double bed.

**Gold Studio:** A premium studio option with enhanced features.



## CHAPTER - ALDGATE RESIDENCE

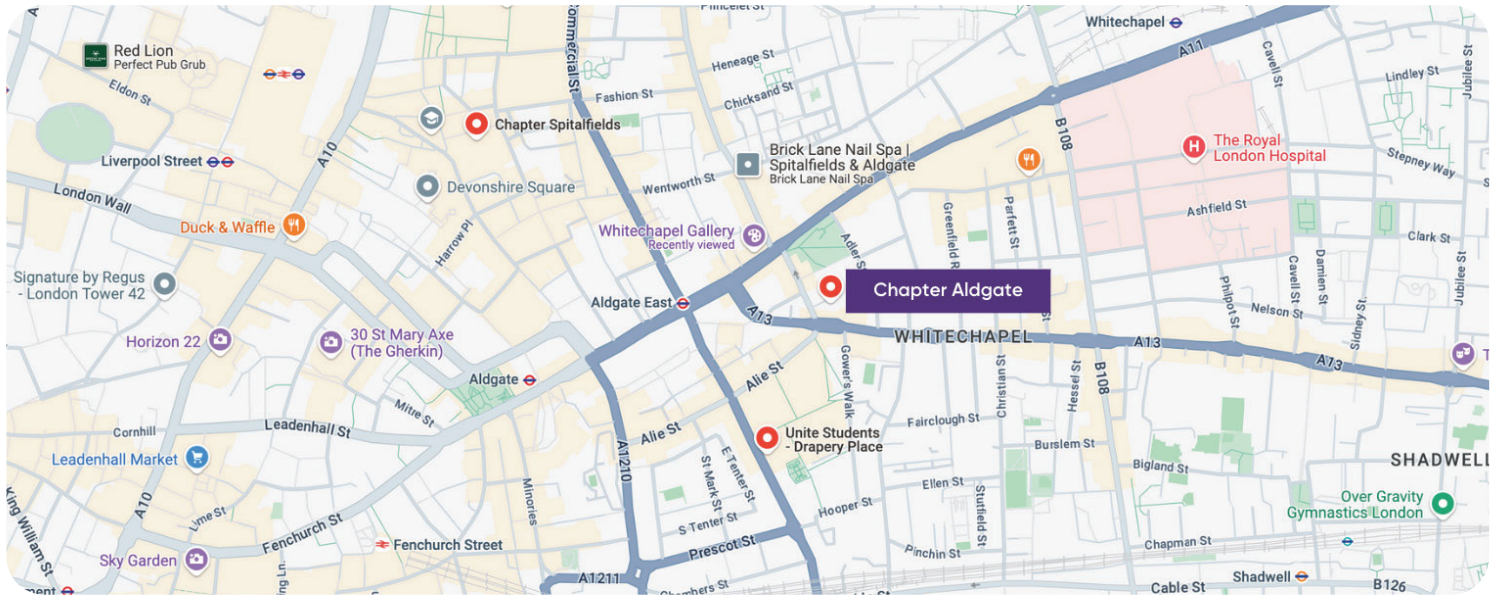
Aldgate Residence is a premier student accommodation located in East London, right next door to HULT International Business School. Refurbished in 2017, this modern residence features an advanced gym, fitness studio, screening room, social spaces, and a study area offering panoramic views of the city. Its proximity to major universities and London landmarks makes it an exceptional student living choice.

### Amenities

- All-inclusive bills
- WiFi
- Gym and fitness studio
- Screening room
- Social spaces
- Study areas with panoramic city views
- 24/7 on-site support
- Wheelchair access
- Courtyard

### Distance to Nearby Universities:

- HULT International Business School:** Next door
- Istituto Marangoni London:** 7 minutes walk
- Queen Mary University of London:** 12 minutes via bus
- Coventry University:** 12 minutes walk
- King's College London (Strand Campus):** 20 minutes via tube
- INTO University:** 12 minutes walk
- Kaplan International Language School:** 25 minutes via tube
- EC Language School:** 30 minutes via bus



**Address** : 1-2 Education Square, Whitechapel, London E1 1DF, United Kingdom  
**Nearest Tube Station** : Aldgate East (District, Hammersmith & City Lines)

## Nearby Attractions & Key Locations

**Spitalfields Market:** A dynamic market known for its unique shops, street food, and trendy fashion stalls, located just 10 minutes away.

**Brick Lane:** Famous for its eclectic mix of art galleries, vintage shops, and curry houses, Brick Lane is a cultural hotspot within a 15-minute walk.

## Room Options

**Silver En-Suite Mid-Level:** A well-appointed 17.5m<sup>2</sup> ensuite room offering comfort and convenience.

**Silver En-Suite Plus Lower Level:** This is similar to the Silver Ensuite but has additional privacy.

**Bronze Studio Lower Level:** A 17.5m<sup>2</sup> studio that combines a private living space with essential amenities.

**Bronze Studio Mid-Level:** An upgraded studio experience with mid-level placement, providing comfort and convenience.

**Bronze Studio Plus Lower Level:** This is a slightly larger studio with enhanced features, sized between 16 and 17.5m<sup>2</sup>.

**Silver Studio Plus Lower Level:** A spacious 17-18m<sup>2</sup> studio for those who prefer more space.

**Silver Studio Mid-Level:** An 18m<sup>2</sup> studio offering an ideal balance of space and comfort.



## CHAPTER - EALING RESIDENCE

Situated in the community of North Acton, Chapter Ealing combines high-end city living with easy access to London's top universities and the West End. Located just steps from the tube station, this residence offers the best of both worlds: a multicultural neighbourhood with great shopping, food, and culture, alongside quick connections to central London.

The proximity to major universities like Imperial College London and the University of Westminster makes it an excellent choice for students.

### Amenities

- WiFi
- Laundry facilities
- Gym
- Social spaces
- Cinema
- Games room
- Bike storage
- Study spaces
- Roof terrace
- 24/7 assistance
- Secure entry
- All-inclusive bills

### Nearby Universities

- University of West London:** 20 minutes via tube
- University of Westminster:** 30 minutes via tube
- Imperial College London:** 13 minutes via tube
- London School of Economics (LSE):** 33 minutes via tube



**Address** : Holbrook House, 3 Victoria Rd, North Acton, London W3 6UN, UK  
**Nearest Tube Station** : North Acton Station (Central Line)

### Nearby Attractions & Key Locations

**Universal Display:** 0.3 miles

**Wales Farm Road Bus Station:** 0.1 miles

**Ealing Broadway Shopping Centre:** A popular shopping destination offering a range of retail stores, restaurants, and entertainment options, just a short journey away.

**Westfield London:** One of the largest shopping centres in Europe, located within easy reach via the Central Line.

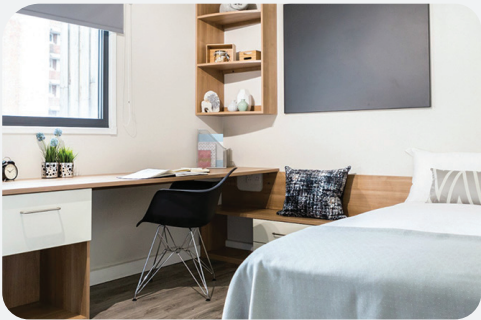
**The Drapers Arms & The Grove:** Popular local pubs offering a traditional British pub experience.

**Walpole Park:** A beautiful green space in Ealing, perfect for relaxing walks and outdoor activities

### Room Options

**Bronze Studio Mid Level:** Approximately 12.9m<sup>2</sup>, featuring a bed, en-suite bathroom, study area, storage space, and kitchenette.

**Silver Studio Mid Level:** This studio is approximately 14 m<sup>2</sup> and offers a bit more space. It has features similar to those of the Bronze Studio.



## CHAPTER - HIGHBURY RESIDENCE

Highbury Residence offers modern student accommodation in a recently refurbished building with excellent social spaces and rooms. Situated just a few minutes walk from London Metropolitan University and Holloway Road Underground Station, this residence provides quick access to central London and various universities.

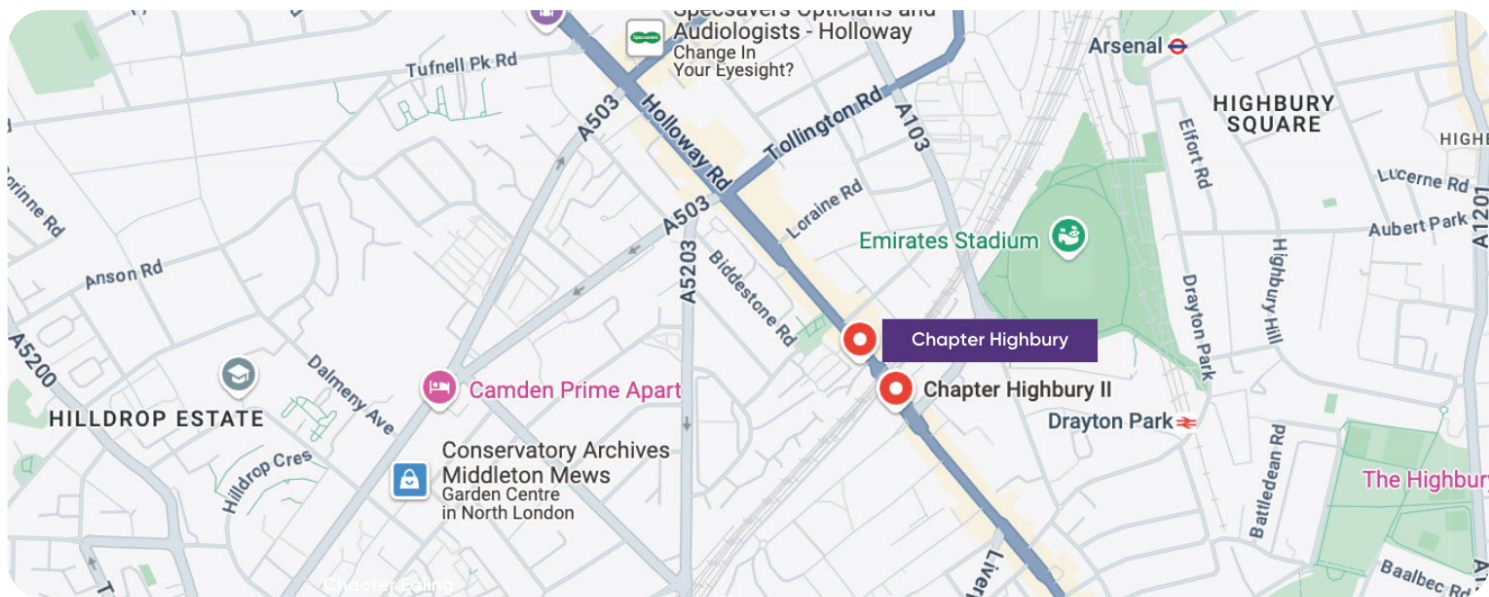
Located in a predominantly residential area, Highbury offers a friendly and relaxed atmosphere, attracting students and professionals.

### Amenities

- WiFi
- Laundry facilities
- Gym
- Wheelchair access
- Entertainment areas
- All-inclusive bills

### Nearby Universities

- London Metropolitan University:** 0.1 miles (3 minutes walk)
- University College London (UCL):** 18 minutes via tube
- City, University of London:** 24 minutes via tube
- University of Westminster:** 23 minutes via tube
- School of Oriental and African Studies (SOAS):** 18 minutes via tube



**Address** : Chapter Highbury, 309 Holloway Rd, London N7 9DS, United Kingdom  
**Nearest Tube Station** : Holloway Road Station (Piccadilly Line)

### Nearby Attractions & Key Locations

**Arsenal Stadium:** 0.3 miles (7 minutes walk)

**Holloway Road Bus Station:** 0.1 miles (2 minutes walk)

**Finsbury Park:** 15-minute walk; a large public park offering sports facilities, gardens, and a lake.

**Upper Street, Islington:** 20 minutes walk; a bustling street known for its restaurants, bars, and theatres.

**Camden Town:** 15 minutes via public transport; famous for its market, nightlife, and alternative culture scene.

### Room Options

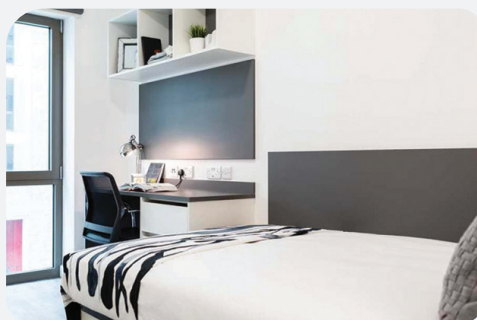
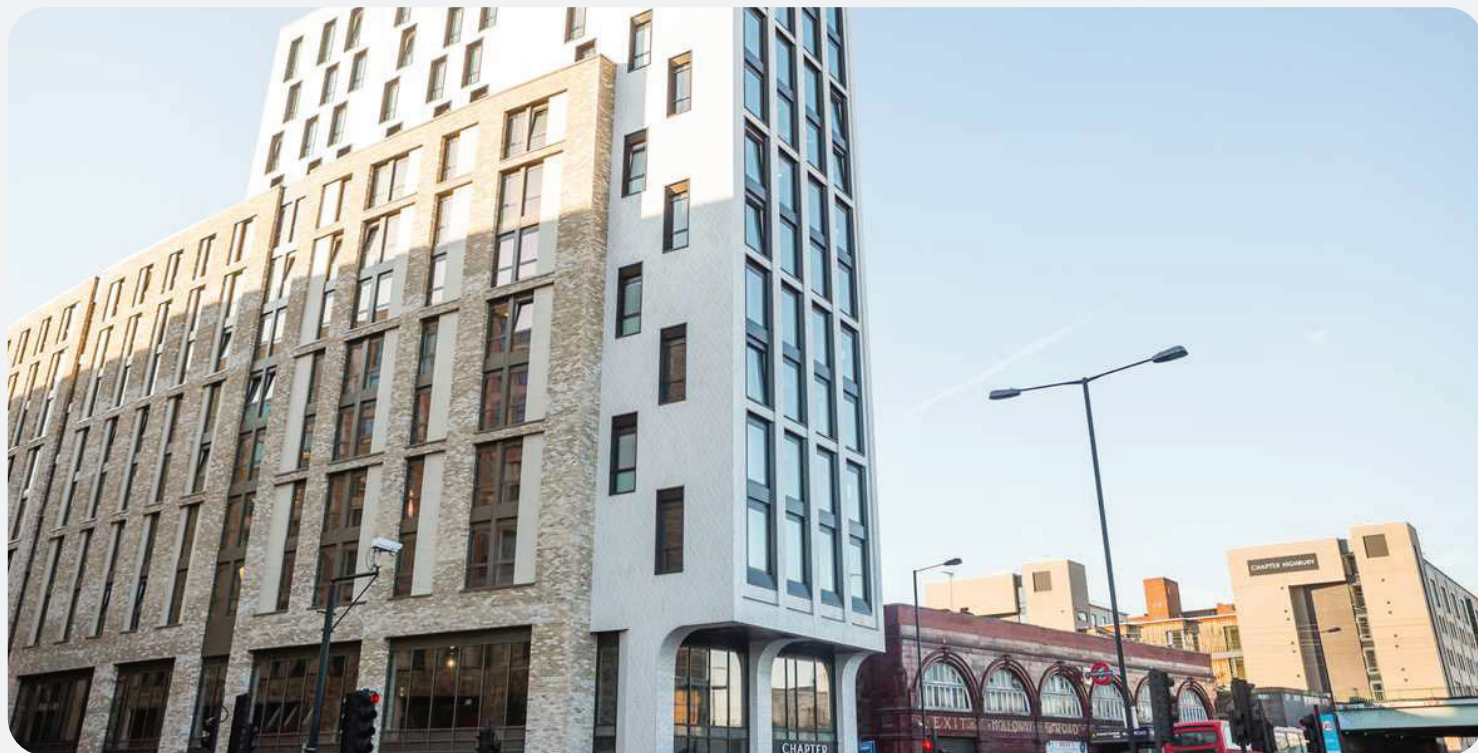
**Bronze En-Suite Lower Level:** 13m<sup>2</sup>, compact double bed, en-suite bathroom, shared kitchen and living area.

**Bronze En-Suite Mid Level:** 13m<sup>2</sup>, compact double bed, en-suite bathroom, shared kitchen and living area.

**Bronze En-Suite Upper Level:** 13m<sup>2</sup>, compact double bed, en-suite bathroom, shared kitchen and living area.

**Bronze Studio Mid Level:** 13m<sup>2</sup>, compact double bed, en-suite bathroom, private kitchenette.

**Silver Studio XL Mid Level:** 15m<sup>2</sup>, compact double bed, en-suite bathroom, private kitchenette, TV screen included.



## CHAPTER - Highbury II Residence

Highbury II Residence is located in the dynamic Zone 2, North London, just steps away from Holloway Road tube station and a short walk to London Metropolitan University. This accommodation offers an intense community atmosphere within a cosmopolitan area popular among students and young professionals.

Highbury II features stylishly designed studios with private kitchens and bathrooms, fully furnished and finished to a high specification, providing comfort and convenience.

### Amenities

- WiFi
- Laundry facilities
- Gym
- Wheelchair access
- Entertainment areas
- All-inclusive bills

### Nearby Universities

**London Metropolitan University:** 3 minutes walk

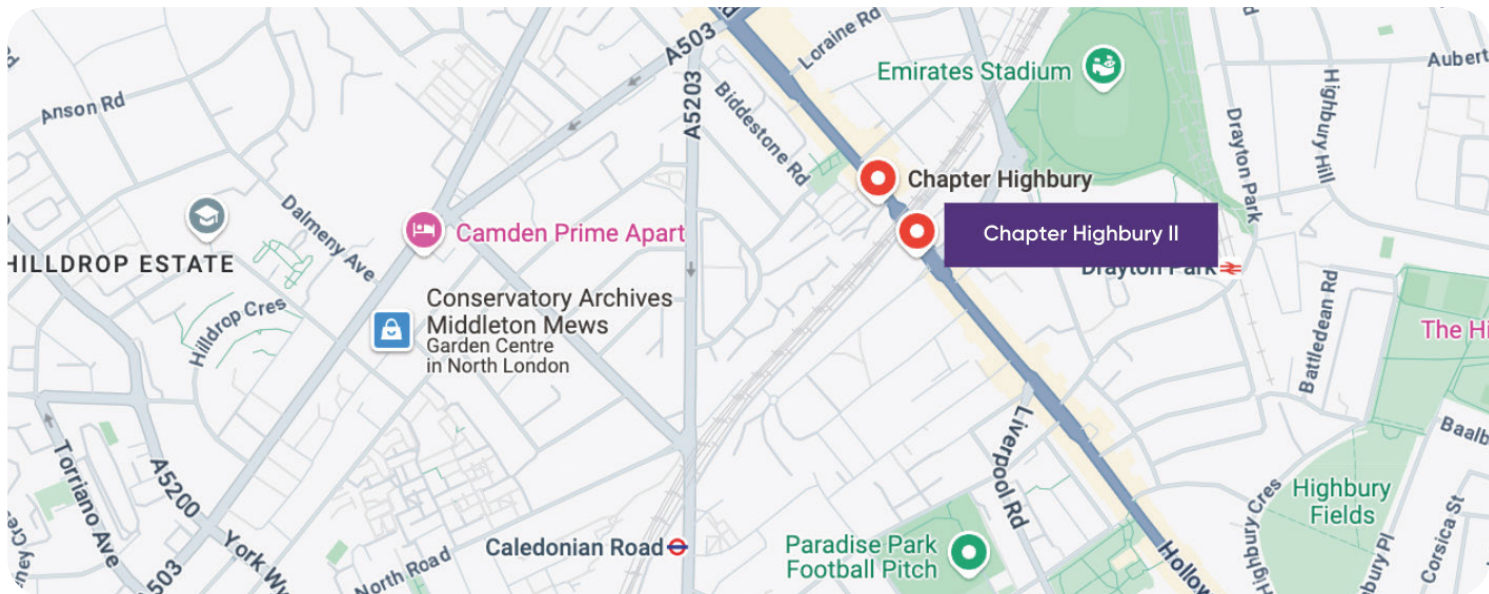
**University College London (UCL):** 18 minutes via tube

**City, University of London:** 24 minutes via tube

**University of Westminster:** 23 minutes via tube

**School of Oriental and African Studies (SOAS):** 18 minutes via tube





**Address** : Chapter Highbury II, 295 Holloway Rd, London N7 8HS, UK  
**Nearest Tube Station** : Holloway Road Station (Piccadilly Line)

### Nearby Attractions & Key Locations

**Arsenal Stadium:** 0.4 miles

**Holloway Road Bus Station:** 0.1 miles

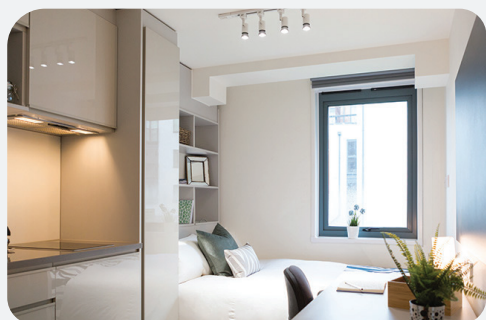
**Finsbury Park:** 20 minutes walk; a large public park with sports facilities, gardens, and a lake.

**Upper Street, Islington:** 20 minutes walk; a bustling street known for its restaurants, bars, and theatres.

**Camden Town:** 16 minutes by bus; famous for its market and vibrant music scene

### Room Options

**Silver Studio Lower Level:** A 16-17m<sup>2</sup> private studio with an en-suite bathroom, double bed, private kitchen, and living area, perfect for students seeking independence.



## CHAPTER - ISLINGTON RESIDENCE

Located in the north London area of Zone 2, Islington Residence offers students a prime location just moments from Caledonian Park and one stop away from King's Cross St. Pancras. This residence is perfect for students looking to enjoy the creative vibes of Islington, with easy access to Shoreditch, Dalston, and the City. Students benefit from modern facilities, including a private cinema, social and study spaces, a games area, and an on-site gym. With 24/7 on-site support and a 200MB dual-band WiFi, Islington Residence offers a top-notch student living experience.

### Amenities

- WiFi
- Laundry facilities
- Gym
- Wheelchair access
- Private cinema
- Social spaces
- Games area
- 24/7 on-site team
- All-inclusive bills

### Nearby Universities

**London Metropolitan University, Rocket Complex:** 0.7 miles

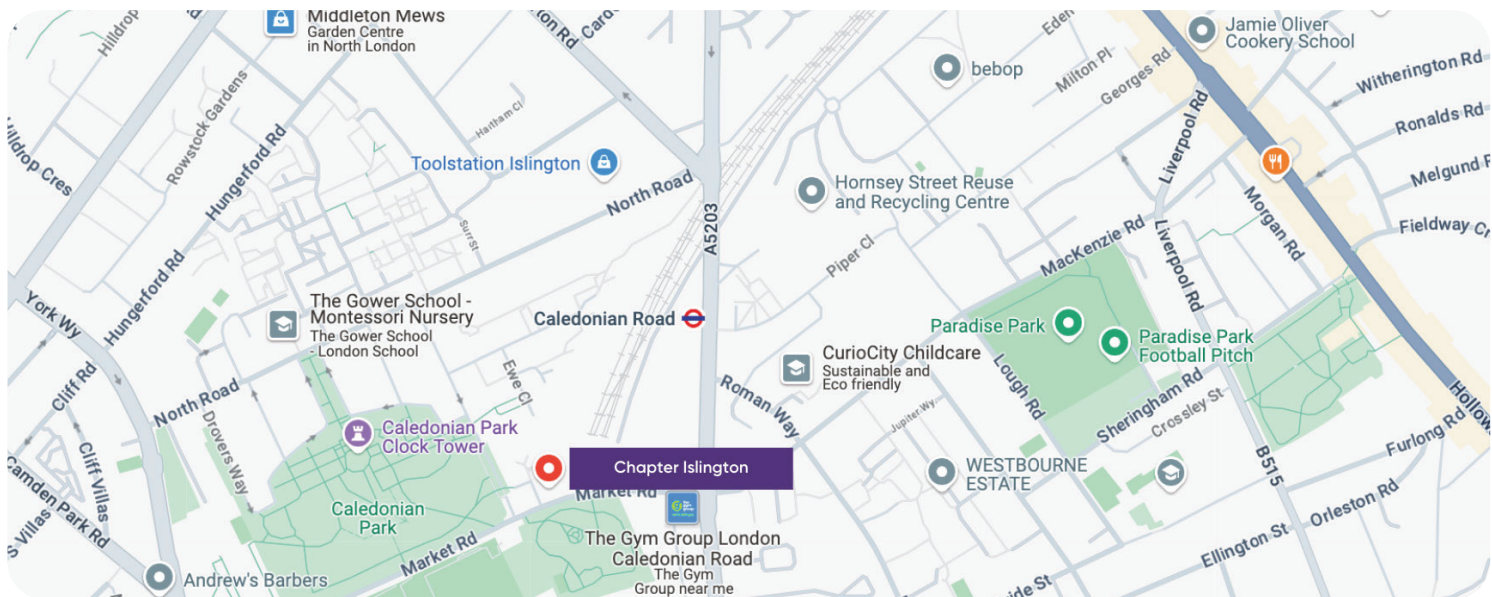
**City, University of London:** 21 minutes via tube

**University College London (UCL):** 18 minutes via tube

**King's College London:** 25 minutes via tube

**University of Westminster:** 25 minutes via tube

**School of Oriental and African Studies (SOAS):** 16 minutes via tube



**Address** : 32-34 Market Rd, London N7 9AW, United Kingdom  
**Nearest Tube Station** : Caledonian Road (Piccadilly Line)

## Nearby Attractions & Key Locations

**Caledonian Park:** 0.2 miles (4 minutes walk)

**King's Cross St. Pancras:** One stop away; central transport hub with Eurostar access.

## Room Options

**Silver En-Suite Mid Level:** 12m<sup>2</sup>, three-quarter bed, en-suite bathroom, shared kitchen and living area.

**Silver En-Suite Lower Level:** 12m<sup>2</sup>, three-quarter bed, en-suite bathroom, shared kitchen and living area.

**Gold En-Suite Mid Level:** 13-14m<sup>2</sup>, three-quarter bed, en-suite bathroom, shared kitchen and living area.

**Gold En-Suite Lower Level:** 13-14m<sup>2</sup>, three-quarter bed, en-suite bathroom, shared kitchen and living area.

**Bronze Studio Lower Level:** 12-14m<sup>2</sup>, double bed, en-suite bathroom, private kitchenette.

**Bronze Studio Upper Level:** 12-14m<sup>2</sup>, double bed, en-suite bathroom, private kitchenette.

**Silver Studio Mid Level:** 17-20m<sup>2</sup>, double bed, en-suite bathroom, private kitchenette.

**Gold Studio Mid Level:** 25-29m<sup>2</sup>, double bed, en-suite bathroom, private kitchen.



## CHAPTER - KING'S CROSS RESIDENCE

Situated in the cultural heart of King's Cross, this modern student residence offers stunning views of London. Just a minute's walk from King's Cross St. Pancras station, it provides unrivalled transport links across the city, country, and Europe via the Eurostar. The area is known for its relaxed vibe, with access to quirky Camden Town, upmarket Regent's Park, and creative Clerkenwell. The residence is ideal for students seeking proximity to London's universities and the vibrant surroundings of King's Cross.

### Amenities

- WiFi
- Laundry facilities
- Gym
- Wheelchair access
- Entertainment areas
- All-inclusive bills

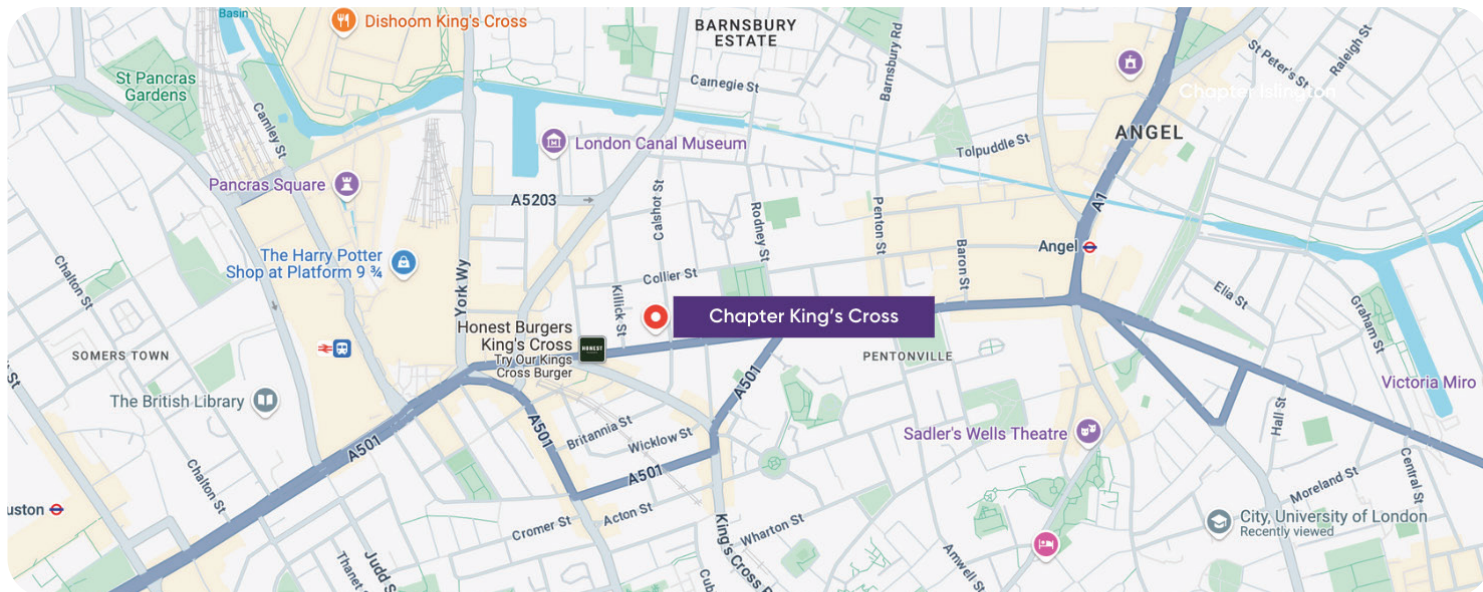
### Nearby Universities

**University College London (UCL):** 10 minutes via tube

**King's College London:** 20 minutes via bus

**City, University of London:** 12 minutes via bus

**University of Westminster:** 16 minutes via tube



**Address** : 200 Pentonville Rd, London N1 9JP, United Kingdom  
**Nearest Tube Station** : King's Cross St. Pancras (Piccadilly, Northern, Victoria, Circle, Metropolitan, Hammersmith & City Lines)

## Nearby Attractions & Key Locations

**St. Pancras International Station:** 9 minutes walk; central transport hub with Eurostar access.

**The British Library:** 7 minutes walk; one of the world's largest libraries.

**Camden Market:** 15 minutes via bus; famous for its eclectic mix of shops and food stalls.

**Regent's Park:** 15 minutes walk; one of London's Royal Parks, offering expansive green spaces.

**Granary Square:** 10 minutes walk; a vibrant public space with fountains, restaurants, and cultural venues.

## Room Options

**Bronze En-Suite Penthouse:** 16m<sup>2</sup>, single bed, en-suite bathroom, study area, storage space.

**Bronze Studio Mid Level:** En-suite bathroom, private kitchen, compact Hypnos double bed, study space, living area.

**Bronze Studio Upper Level:** 16m<sup>2</sup>, compact double bed, en-suite bathroom, private kitchenette, study area.

**Bronze Studio Upper Level Premium View:** This unit features an en-suite bathroom, private kitchen, compact Hypnos double bed, study space, and a living area with a premium view.



## CHAPTER LEWISHAM RESIDENCE

Chapter Lewisham is in South East London, offering excellent transport links into central London. The area is close to creative New Cross and the historic Royal Borough of Greenwich, making it an ideal location for students exploring London’s rich culture and heritage.

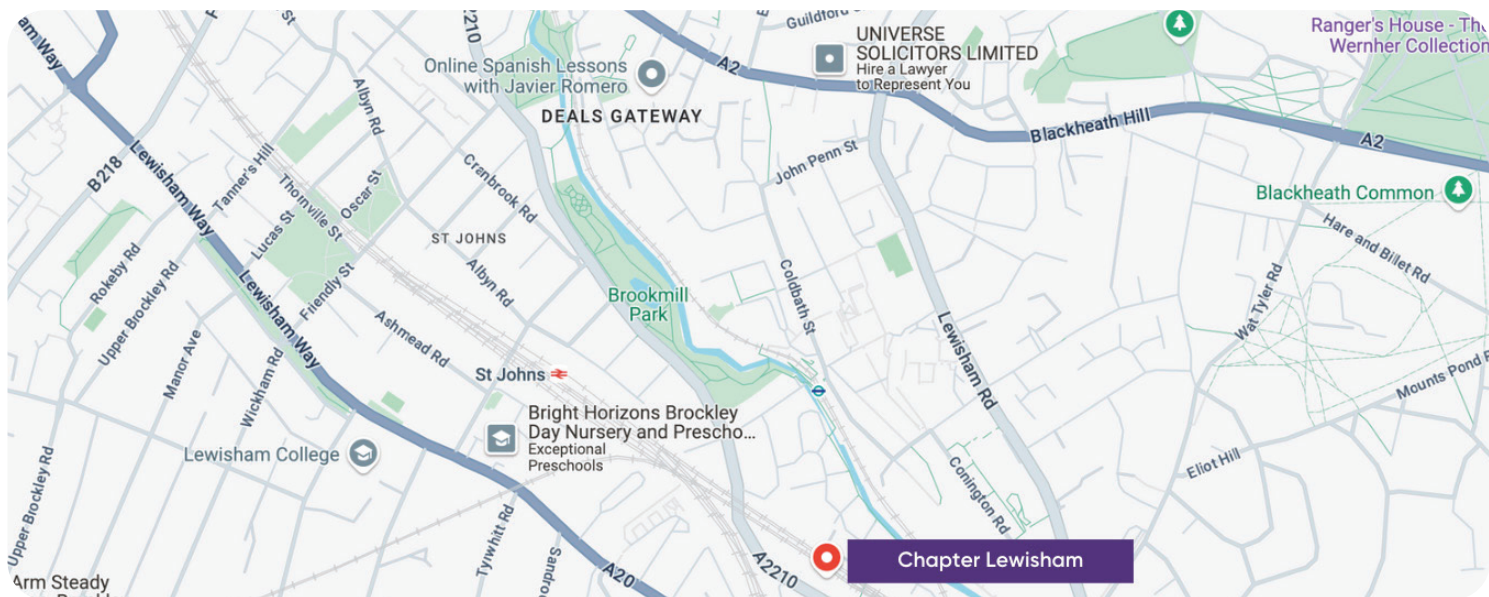
With nearby parks, markets, and universities, it provides a balanced environment for both study and leisure.

### Amenities

- WiFi
- Laundry facilities
- Gym
- Wheelchair access
- Bike storage
- Entertainment areas
- Games room
- Roof terrace
- 24/7 assistance
- All-inclusive bills

### Distance to Nearby Universities:

- Goldsmiths, University of London:** 8 minutes via bus
- University of Greenwich:** 17 minutes via DLR
- King’s College London:** 26 minutes via train
- UCL (University College London):** 45 minutes via train
- Oxford International Education Group:** 16 minutes via bus



**Address** : Chapter Lewisham, 46 Thurston Rd, London SE13 7SD, United Kingdom  
**Nearest Station** : Lewisham (DLR)

### Nearby Attractions & Key Locations

**Brookmill Park:** 0.3 miles

**St Johns Station:** 0.3 miles

**Lewisham Shopping Centre:** 0.4 miles

**Greenwich Park:** A vast park offering stunning views of London and the River Thames, home to the Royal Observatory and the Prime Meridian.

**Blackheath:** A leafy, historic area perfect for leisurely walks, picnics, and outdoor sports.

**Lewisham Market:** A bustling market offering fresh produce, street food, and various goods within walking distance.

**Cutty Sark:** The famous 19th-century tea clipper, now a museum ship located in nearby Greenwich.

**New Cross:** A vibrant cultural hub known for its eclectic arts scene and nightlife.

### Room Options

**Bronze Studio Mid Level:** A 17m<sup>2</sup> private studio featuring an en-suite bathroom, private kitchen, and compact double bed, perfect for students seeking independence and privacy.



## CHAPTER - OLD STREET RESIDENCE

Situated in the lively area of Paul Street, Old Street Residence offers students a modern, well-connected living environment in the heart of London's tech and cultural hub.

With its proximity to key academic institutions and London's most dynamic neighbourhoods, this residence is perfect for students seeking a blend of comfort, convenience, and exciting city life.

### Amenities

- WiFi
- 24-hour security
- All-inclusive bills
- Entertainment facilities
- Laundry services
- CCTV surveillance

### Nearby Universities

**City, University of London:** 15-minute walk or 10 minutes via tube

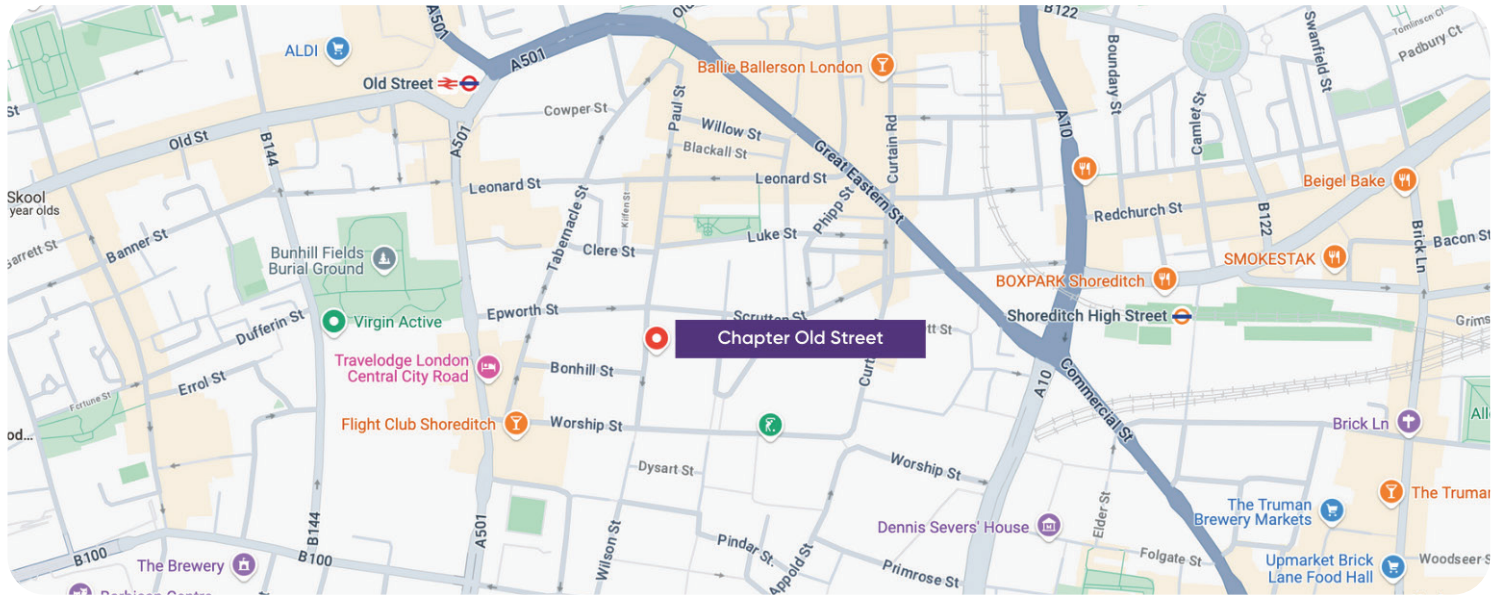
**University of the Arts London (UAL):** 25 minutes via tube

**London School of Economics (LSE):** 25 minutes via tube

**University College London (UCL):** 20 minutes via tube

**King's College London (KCL):** 20 minutes via tube





**Address** : 18 Paul St, London EC2A 4JH, United Kingdom  
**Nearest Tube Station** : Old Street (Northern Line)  
**Nearest Train Line** : Moorgate - National Rail

## Nearby Attractions & Key Locations

**Shoreditch:** 5-minute walk – A trendy area known for its street art, nightlife, and creative energy.

**Barbican Centre:** 15-minute walk – A renowned arts and learning centre with diverse performances and exhibitions.

**Silicon Roundabout:** 5-minute walk – Situated at Old Street Roundabout, it's the epicentre of London's tech scene.

**The British Museum:** 20 minutes by tube – A must-visit museum showcasing art and artefacts worldwide.

**St. Paul's Cathedral:** 20 minutes by foot – One of London's most iconic landmarks with a stunning dome and panoramic views.

## Room Options

**Silver Studio Mid Level:** Approximately 20m<sup>2</sup>, this studio includes a 4ft double bed, study area, and kitchenette. Located on the mid-level, it offers a comfortable and practical living space.



## CHAPTER - PORTOBELLO RESIDENCE

Located in the vibrant area of West London, Chapter Portobello offers students a lively and well-connected living experience.

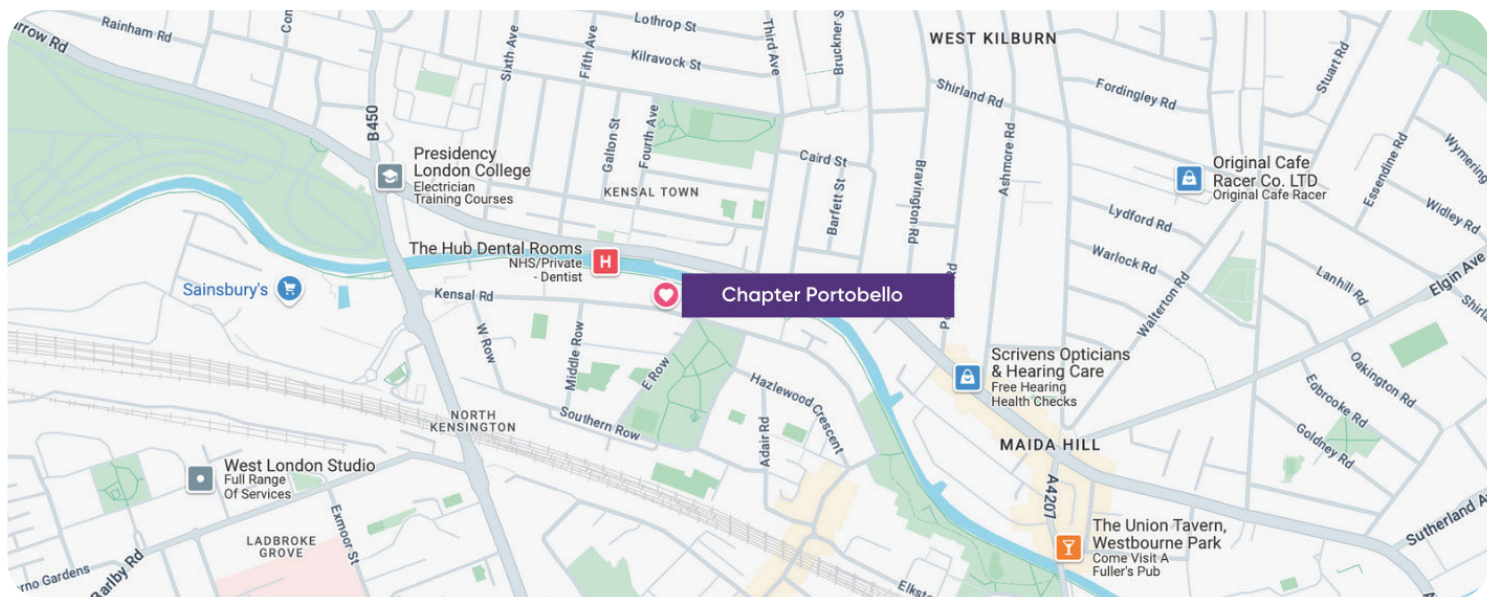
Nestled near the iconic Portobello Road, this residence provides easy access to the eclectic markets and rich cultural attractions of Notting Hill. The modern and stylish rooms are designed with students in mind, offering a perfect blend of comfort, convenience, and community in one of London's most dynamic neighbourhoods.

### Amenities

- WiFi
- 24-hour security
- All-inclusive bills
- Entertainment facilities
- Laundry services
- CCTV surveillance

### Nearby Universities

- University College London (UCL):** 25 minutes via tube
- Imperial College London:** 20 minutes via tube
- London School of Economics (LSE):** 35 minutes via tube
- King's College London (KCL):** 35 minutes via tube
- University of Westminster:** 20 minutes via tube



- Address** : Chapter Portobello, 1 Alderson St, London W10 5JY, United Kingdom
- Nearest Tube Station** : Westbourne Park (Hammersmith & City Line)
- Nearest Train Line** : Kensal Rise - Overground

## Nearby Attractions & Key Locations

**Portobello Market:** 10-minute walk – World-renowned for its antiques, fashion, and diverse food stalls, offering a unique shopping experience.

**Notting Hill:** 15-minute walk – A picturesque neighbourhood famous for its colourful houses, boutiques, and cosy cafes, ideal for a weekend stroll.

**Westfield London:** 15 minutes by tube – A major shopping and entertainment destination offering a vast array of retail, dining, and leisure options.

## Room Options

**Bronze Studio Mid Level:** A compact 17-20m<sup>2</sup> studio featuring a 4ft double bed, study desk, and kitchenette, perfect for a functional and private living space.

**Silver Studio Mid Level:** A 20m<sup>2</sup> studio with a 4ft double bed, study area, and kitchenette, offering more space and comfort.

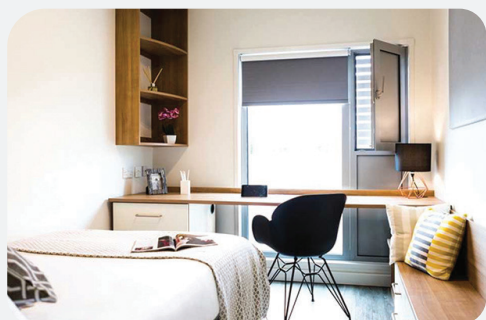
**Gold Studio Mid Level:** A spacious 25m<sup>2</sup> studio with a 4ft double bed and enhanced living amenities, ideal for a more luxurious student experience.

**Bronze Studio Upper Level:** A compact 17-20m<sup>2</sup> studio featuring a 4ft double bed.

**Gold XL Studio Upper Level:** A compact 17-20m<sup>2</sup> studio featuring a 4ft double bed.

**Silver Studio Mid Level Premium Canal View:** A 20m<sup>2</sup> studio with a 4ft double bed.

**Bronze Studio Mid Level Premium Canal View:** A compact 17-20m<sup>2</sup> studio featuring a 4ft double bed.



## CHAPTER – SOUTH BANK RESIDENCE

Situated in the vibrant area of South Bank, this residence is centrally located in Zone 1, offering easy access to key landmarks and excellent transport links.

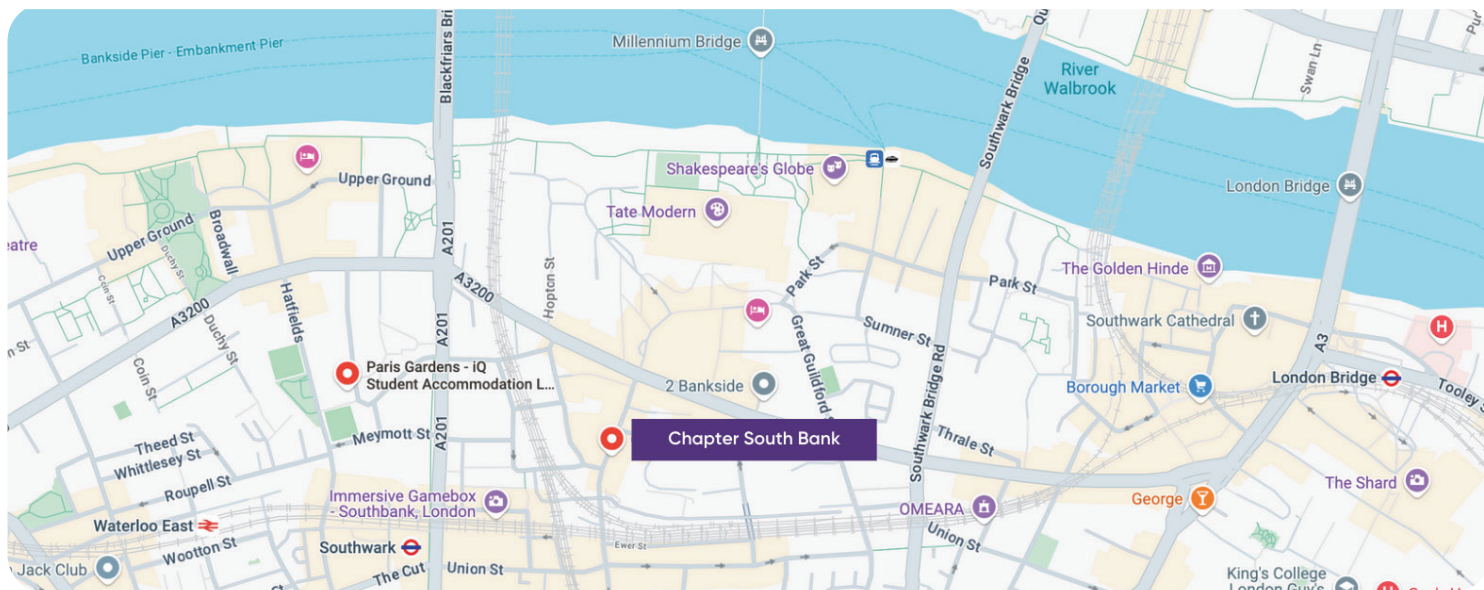
The modern rooms are designed to provide comfort and convenience, making it an ideal choice for students who want to experience London's cultural and academic hubs.

### Amenities

- WiFi
- 24-hour security
- All-inclusive bills
- Entertainment facilities
- Laundry services
- CCTV surveillance

### Nearby Universities

- King's College London (KCL):** 15 minutes via walk
- London School of Economics (LSE):** 20 minutes via walk
- University of Westminster:** 25 minutes via tube
- University College London (UCL):** 20 minutes via tube
- Imperial College London:** 30 minutes via tube



- Address** : 17 Great Suffolk St, London SE1 0NS, United Kingdom
- Nearest Tube Station** : Southwark (Jubilee Line)
- Nearest Train Line** : Waterloo - South Western Railway

### Nearby Attractions & Key Locations

**London Eye:** Just a 10-minute walk away, this iconic Ferris wheel offers panoramic views of the city and is one of London’s most popular attractions.

**Southbank Centre:** A major arts centre located 15 minutes away by foot, offering a variety of cultural events, including concerts, theatre performances, and art exhibitions.

**Tate Modern:** A world-renowned modern art gallery located 20 minutes away by foot, featuring works by some of the most famous contemporary artists.

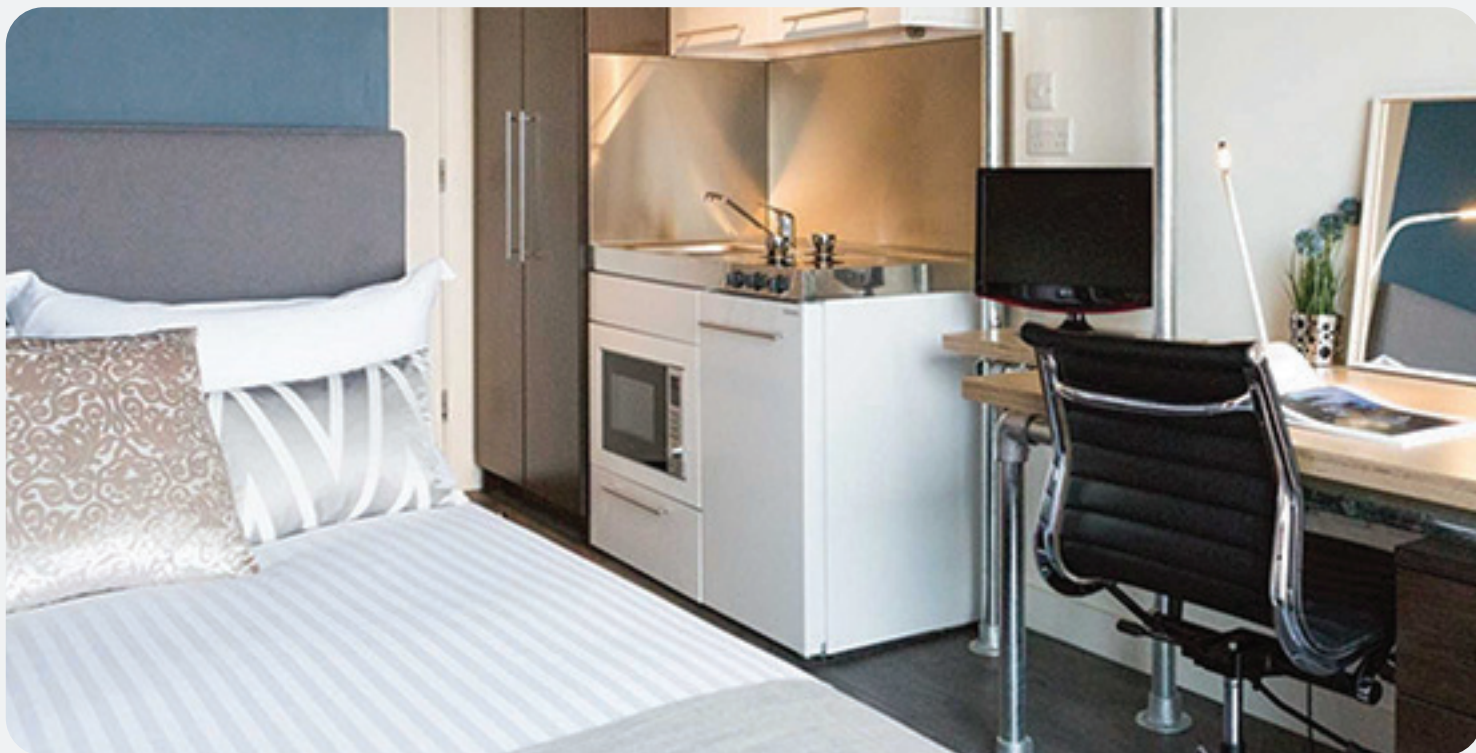
**Westminster Bridge:** A 5-minute walk from the residence, this bridge offers stunning views of the Houses of Parliament and Big Ben.

**The Old Vic Theatre:** One of London’s most famous theatres, just 10 minutes away by foot, offering a range of classic and contemporary performances.

### Room Options

**Bronze En-Suite Mid Level:** A 16m<sup>2</sup> room on the mid-level with a 4ft double bed, en-suite bathroom, study area, and storage space, providing a comfortable and private living space.

**Bronze Studio Mid Level:** A 20m<sup>2</sup> studio on the mid-level featuring a 4ft double bed, study desk, and kitchenette, offering a functional and spacious living area.



## CHAPTER – SPITALFIELDS RESIDENCE

Right in the middle of London's most lively and historic areas, Spitalfields Residence offers students modern living with easy access to the city's central attractions and transport hubs.

The residence is ideal for those looking to experience the lively atmosphere of East London while benefiting from excellent connectivity to universities and cultural sites.

### Amenities

- WiFi
- 24-hour security
- All-inclusive bills
- Entertainment facilities
- Laundry services
- CCTV surveillance

### Nearby Universities

**Queen Mary University of London (QMUL):** 20 minutes via walk

**University of the Arts London (UAL):** 25 minutes via tube

**City, University of London:** 15 minutes via bus

**London School of Economics (LSE):** 15 minutes via tube

**King's College London (KCL):** 20 minutes via tube

**University College London (UCL):** 20 minutes via tube



**Address** : Chapter Spitalfields, 9 Frying Pan Alley, London, E1 7HS, United Kingdom  
**Nearest Tube Station** : Liverpool Street (Central, Hammersmith & City, Circle, & Overground Lines)  
**Nearest Train Line** : Liverpool Street – National Rail

## Nearby Attractions & Key Locations

**Spitalfields Market:** 5-minute walk – A historic market offering a variety of shops, food stalls, and boutiques, making it a popular destination for locals and visitors.

**Brick Lane:** 10-minute walk – Known for its vintage shops, art galleries, and street food, Brick Lane offers a true taste of East London's diverse culture.

**Shoreditch:** 10-minute walk – One of London's most creative and trendy areas, filled with street art, quirky cafes, and nightlife.

**The Gherkin:** 10-minute walk – This iconic London skyscraper symbolises the city's modern architecture and offers stunning views from its surrounding area.

## Room Options

**2 Bedroom Apartment Lower Level:** This apartment includes two bedrooms, each with a 4ft double bed, a shared bathroom, a study area, and a kitchenette. It is located on the lower level and provides a spacious and practical living arrangement for two occupants.

**Bronze Studio Upper Level Premium View:** A 14 m<sup>2</sup> rooms on the upper level with a double bed.

**Silver Studio Mid Level Premium View:** A 15-19 m<sup>2</sup> rooms on the mid-level with a double bed.

**Bronze Studio Mid Level Premium View:** A 14 m<sup>2</sup> rooms on the mid-level with a double bed.

**Silver Studio Upper Level Premium View:** A 15-19 m<sup>2</sup> rooms on the upper level with a double bed.



## CHAPTER – WESTMINSTER RESIDENCE

Westminster Residence, located in London, offers students modern living spaces with exceptional access to the city's amenities and transport links.

This residence is perfect for students who seek the convenience of being in the centre of it all while enjoying a variety of social and study spaces.

### Amenities

- WiFi
- Gym
- Laundry
- Table Tennis
- Social Spaces

### Nearby Universities

**University of Westminster:** 10 minutes via walk

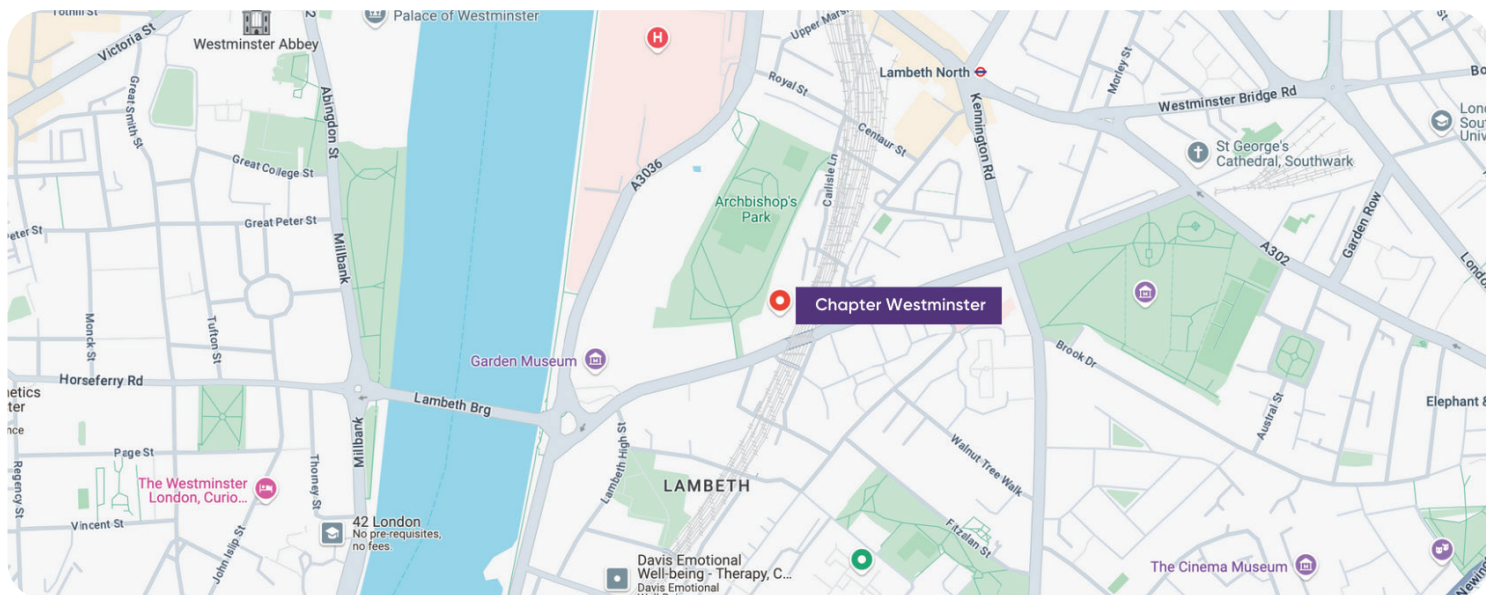
**Imperial College London:** 20 minutes via tube

**King's College London (Strand Campus):** 15 minutes via tube

**London School of Economics (LSE):** 20 minutes via tube

**University College London (UCL):** 25 minutes via tube





- Address** : 200A Lambeth Rd, London SE1 7LR
- Nearest Tube Station** : Lambeth North (Bakerloo Line)
- Nearest Train Line** : Waterloo Station – South Western Railway

## Nearby Attractions & Key Locations

**Westminster Abbey:** 10-minute walk – A historic Gothic church known for royal coronations, weddings, and the burial site of numerous significant figures.

**Houses of Parliament:** 10-minute walk – The iconic seat of the UK Parliament, with Big Ben as its famous clock tower.

**St. James's Park:** 15-minute walk – One of London's most beautiful parks, perfect for a relaxing stroll or outdoor study sessions.

**Tate Britain:** 15-minute walk – An art museum housing a significant collection of British art from 1500 to the present day.

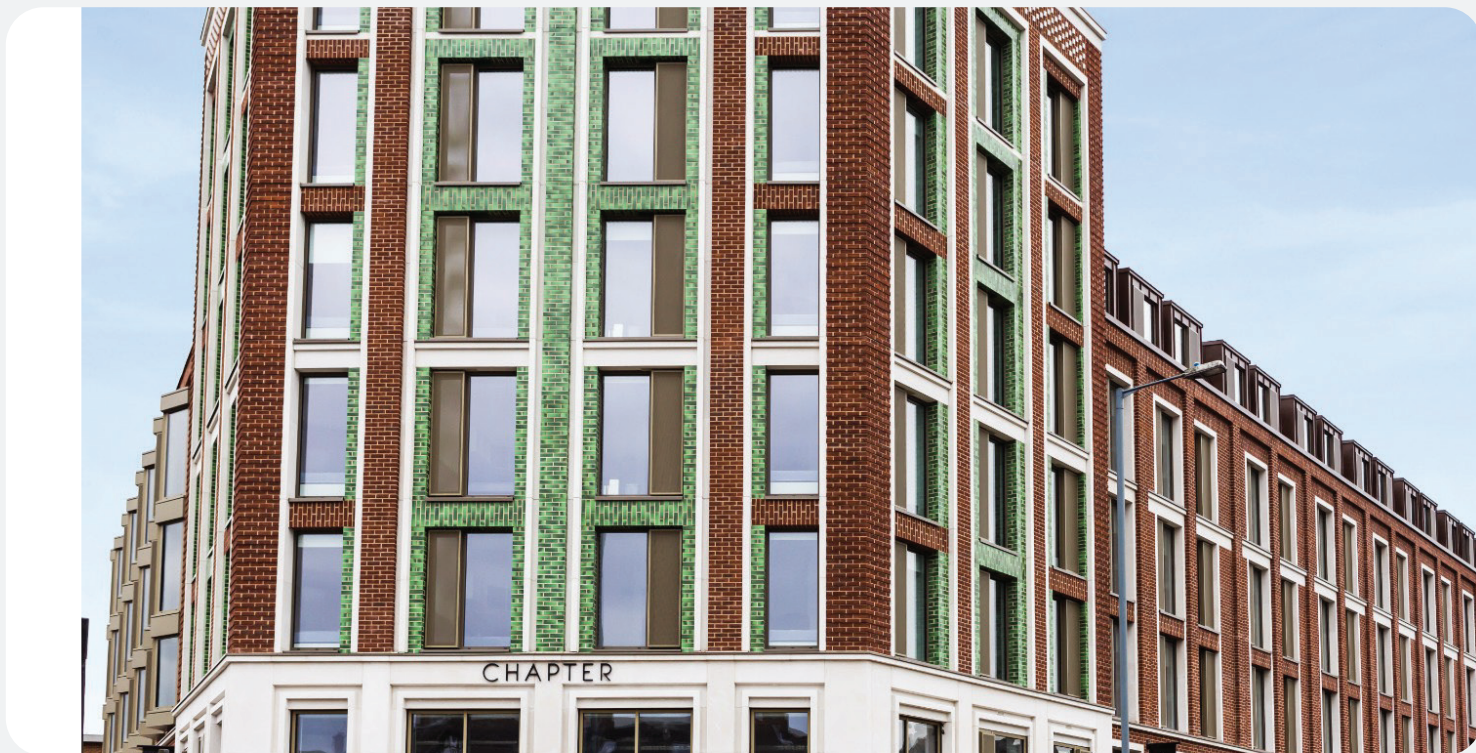
**The Imperial War Museum:** 5-minute walk – A major museum that covers conflicts involving Britain and the Commonwealth since the First World War.

## Room Options

**Silver Studio Lower Level:** A 17–20m<sup>2</sup> studio with a double bed, en-suite bathroom, study area, storage space, and kitchenette. Located on the lower floors for easy access.

**Silver Studio Mid Level:** Similar to the lower level, this 17–20m<sup>2</sup> studio offers a comfortable living space with a double bed, en-suite bathroom, and study area on the mid-level floors.

**Silver Studio Upper Level:** The upper-level version of the Silver Studio offers 17–20m<sup>2</sup> of space with all the essential amenities, plus enhanced views from higher floors.



## CHAPTER - WHITE CITY RESIDENCE

Located in Zone 2, White City Residence offers modern student accommodations, excellent transport links, and access to local amenities.

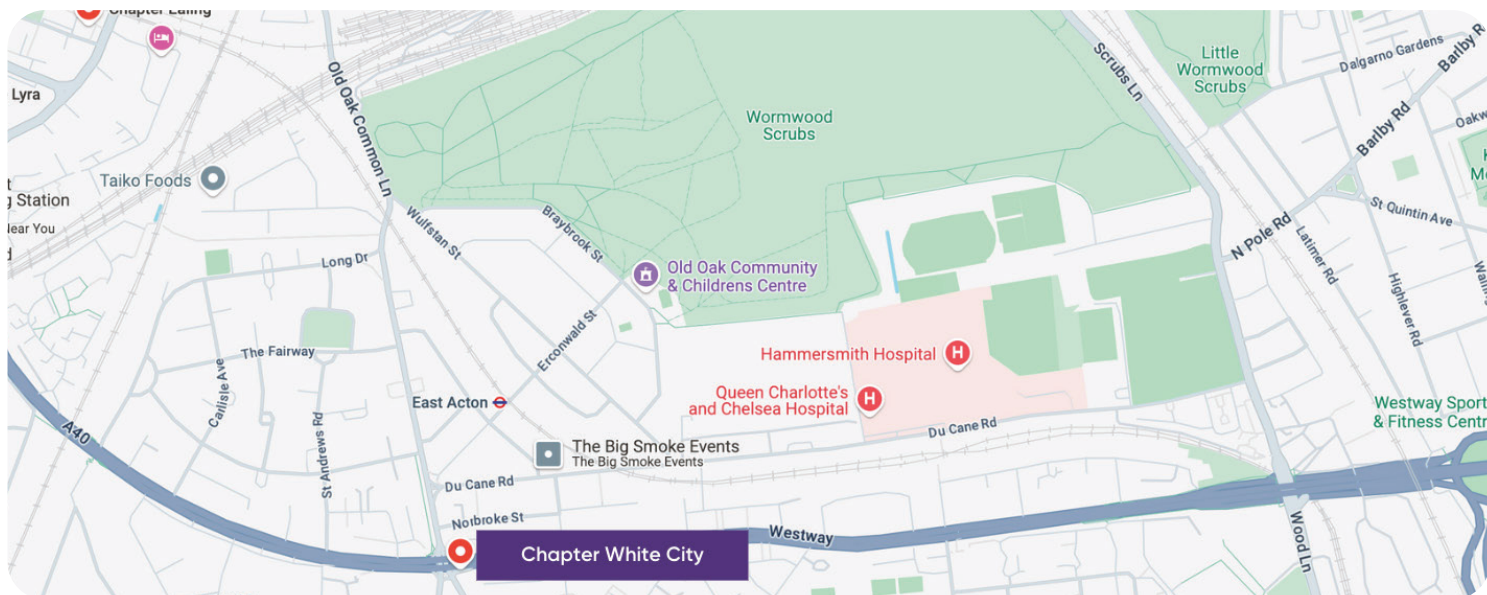
The residence is perfect for students seeking a well-equipped living space in a convenient location, providing a balance of comfort and connectivity.

### Amenities

- WiFi
- 24-hour security
- All-inclusive bills
- Entertainment facilities
- Laundry services
- CCTV surveillance

### Nearby Universities

- Imperial College London:** 20 minutes via tube
- University College London (UCL):** 25 minutes via tube
- London School of Economics (LSE):** 30 minutes via tube
- King's College London (KCL):** 30 minutes via tube
- University of Westminster:** 25 minutes via tube



**Address** : Chapter White City, 10 Westway, London W12 0DD, United Kingdom  
**Nearest Tube Station** : White City (Central Line)  
**Nearest Train Line** : Shepherd's Bush - Overground

### Nearby Attractions & Key Locations

**Westfield London:** 10-minute walk, one of the largest shopping malls in Europe, offering a wide range of shops, dining options, and entertainment.

**White City House:** 5-minute walk, a members-only club with restaurants, bars, a rooftop pool, and a cinema.

### Room Options

**Bronze Studio Mid Level:** A 22m<sup>2</sup> studio on the mid-level featuring a 4ft double bed, study desk, and kitchenette, offering a practical and comfortable living space.

**Bronze Studio Upper Level:** A 22m<sup>2</sup> studio on the upper level with a 4ft double bed, study desk, and kitchenette, providing an elevated view.

**Silver Studio Mid Level:** A 25m<sup>2</sup> studio with more space, featuring a 4ft double bed, study area, and kitchenette on the mid-level.

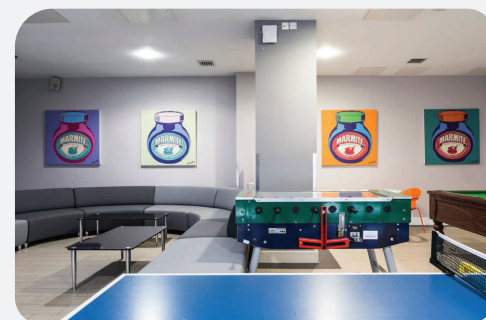
**Silver Studio Upper Level:** A 25m<sup>2</sup> studio offering an elevated view with a 4ft double bed, study area, and kitchenette.

**Gold Studio Upper Level:** A spacious 30m<sup>2</sup> studio on the upper level with a larger living area and enhanced amenities for a more comfortable environment.

**Bronze Studio Mid Level Premium View:** A 22m<sup>2</sup> studio on the mid-level featuring a 4ft double bed.

**Silver Studio Upper Level Premium View:** A 25m<sup>2</sup> studio with more space, featuring a 4ft double bed.

**Gold Studio Upper Level Premium View:** A spacious 30m<sup>2</sup> studio on the upper level with a larger living area.



## COLLEGIATE - DASHWOOD STUDIOS RESIDENCE

Situated in Zone 1, Dashwood Studios offers students a modern studio living option with easy access to central London. The residence is well-connected by public transport, making it a convenient choice for students studying at various London universities.

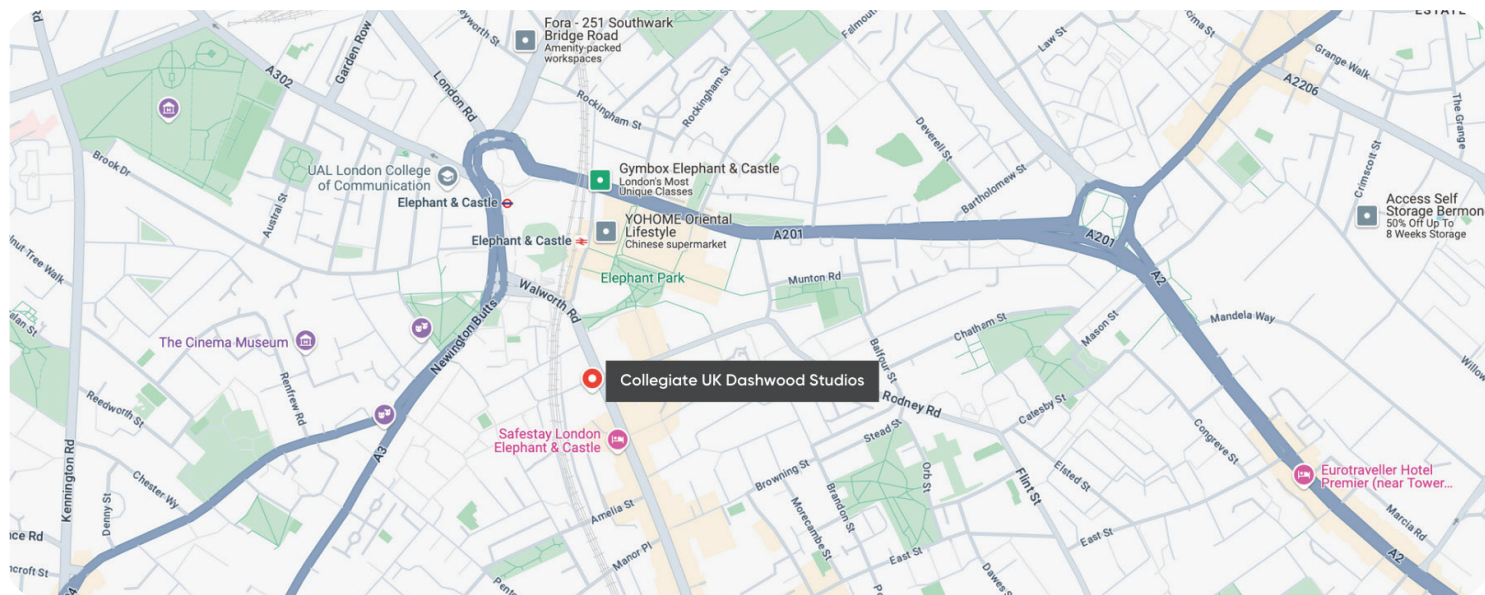
Dashwood Studios provides a comfortable and secure environment, focusing on privacy and modern living.

### Amenities

- WiFi
- 24-hour security
- All-inclusive bills
- Entertainment facilities
- Laundry services
- CCTV surveillance

### Nearby Universities

- University of Westminster:** 20 minutes via tube
- London School of Economics (LSE):** 15 minutes via tube
- Imperial College London:** 30 minutes via tube
- University College London (UCL):** 20 minutes via tube
- King's College London:** 10 minutes via tube



**Address** : 120-138 Walworth Road, London SE17 1JL, United Kingdom  
**Nearest Tube Station** : Elephant & Castle (Bakerloo and Northern Lines)  
**Nearest Train Line** : Elephant & Castle - Thameslink

## Nearby Attractions & Key Locations

**Elephant & Castle Shopping Centre:** 5-minute walk – A local shopping destination with various stores and eateries.

**Southbank Centre:** 20-minute walk – A major arts centre offering cultural events, including concerts, theatre performances, and art exhibitions.

**Borough Market:** 20-minute walk – A famous market known for its wide range of fresh produce, artisanal foods, and unique culinary experiences.

**The Shard:** 15 minutes via tube – One of London's most iconic skyscrapers, offering stunning city views.

**Tate Modern:** 20-minute walk – A world-renowned modern art gallery featuring works by some famous contemporary artists.

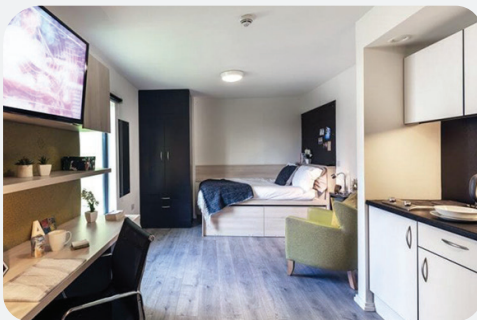
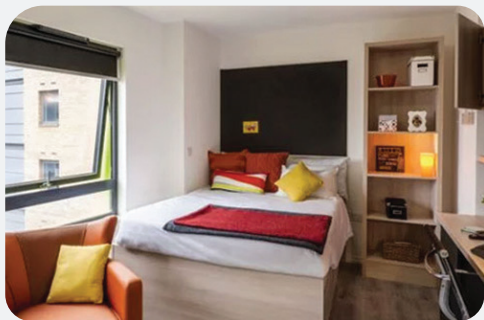
## Room Options

**Standard Studio:** A 17-18 m<sup>2</sup> studio featuring a 4ft double bed and kitchenette, providing a functional and private living space.

**Premium Studio:** A 20-24 m<sup>2</sup> studio featuring a 4ft double bed.

**Premium Plus Studio:** A 18-28 m<sup>2</sup> studio featuring a 4ft double bed.

**Deluxe Studio:** A 27-47 m<sup>2</sup> studio featuring a 4ft double bed.



## DOWNING STUDENTS – THE LYRA RESIDENCE

Located in Zone 2, The Lyra offers students a modern living environment with a variety of room options. The residence provides easy access to local amenities and transport links, making it a convenient choice for students in the area.

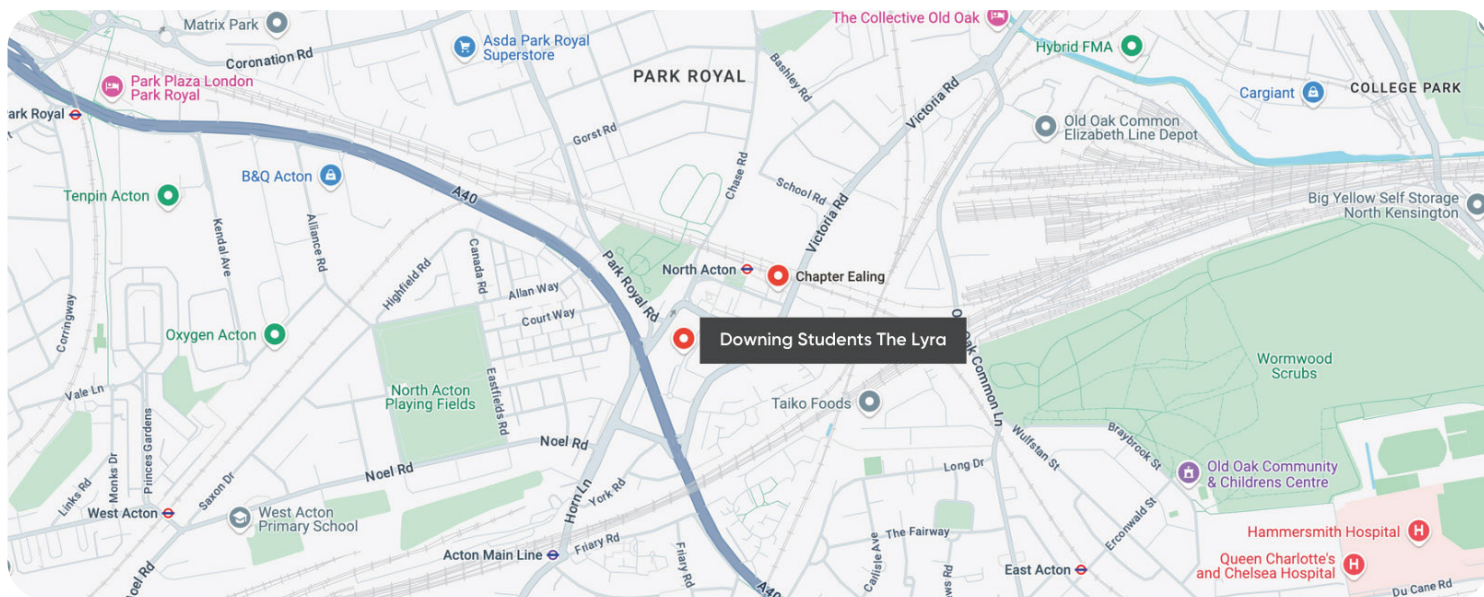
With a focus on comfort and convenience, The Lyra is well-suited for those looking to balance their academic and social lives.

### Amenities

- WiFi
- 24-hour security
- All-inclusive bills
- Entertainment facilities
- Laundry services
- CCTV surveillance

### Nearby Universities

- University of the Arts London (UAL):** 30 minutes via tube
- London Metropolitan University:** 40 minutes via tube
- Queen Mary University of London:** 35 minutes via tube
- City, University of London:** 35 minutes via tube
- University College London (UCL):** 30 minutes via tube



- Address** : Portal Way, North Acton, London W3 6ZX, United Kingdom
- Nearest Tube Station** : North Acton (Central Line)
- Nearest Train Line** : Acton Main Line - Elizabeth Line

### Nearby Attractions & Key Locations

**Westfield London:** 15 minutes via tube – One of the largest shopping centres in Europe, offering a wide range of shops, dining options, and entertainment.

**Wormwood Scrubs Park:** 10-minute walk – An ample open space perfect for outdoor activities and relaxation.

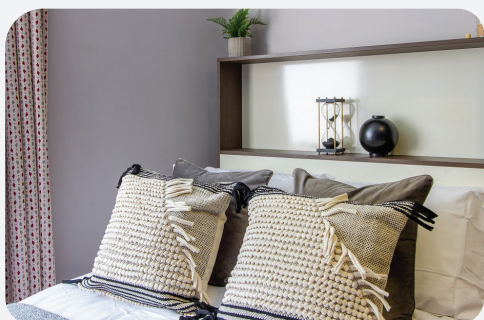
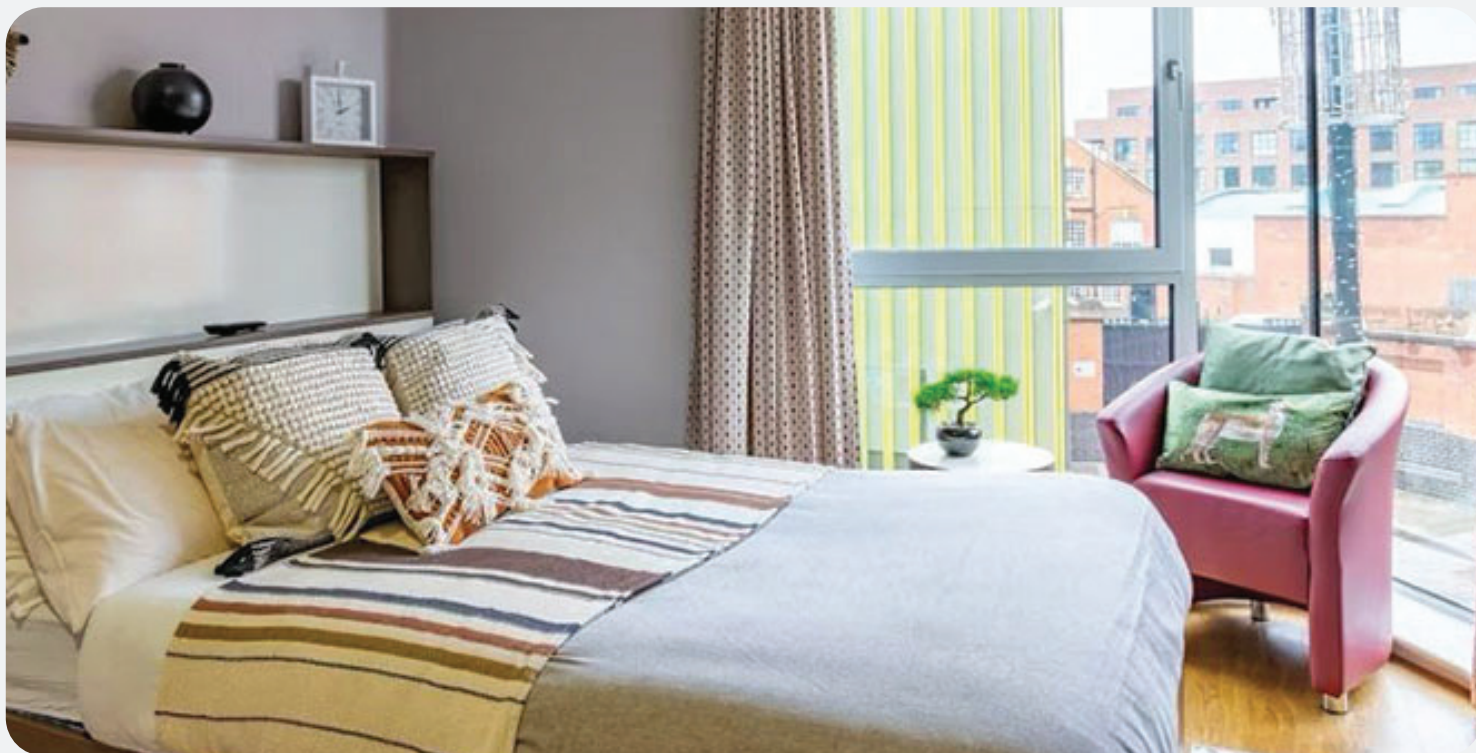
**Acton Park:** 20-minute walk – A local park featuring sports facilities, playgrounds, and green spaces.

**The BBC Television Centre:** 10 minutes via tube – A historic broadcasting centre now home to various entertainment venues, restaurants, and studios.

**Hammersmith Apollo:** 20 minutes via tube – A famous live entertainment venue hosting concerts, comedy shows, and other performances.

### Room Options

**Bronze Studio:** A 22m<sup>2</sup> studio featuring a 4ft double bed, study desk, and kitchenette, offering a practical and comfortable living space.



## HOME FOR STUDENTS - HAWLEY CRESCENT

Located in Zone 1, Hawley Crescent offers students a prime location in the heart of Camden, providing easy access to both academic institutions and recreational facilities.

The residence offers a variety of room options, from en-suite rooms to studios, catering to the diverse needs of students. Its proximity to Camden Market and other iconic local attractions makes it an excellent choice for those who want to experience vibrant city life.

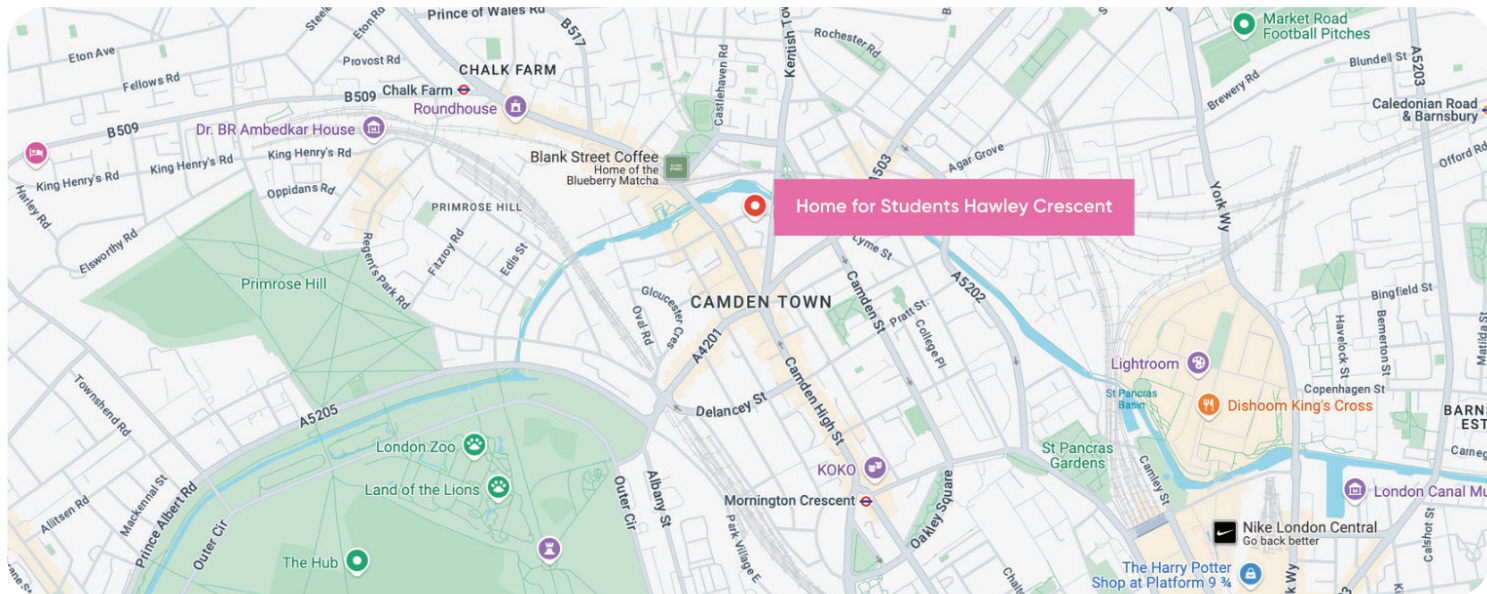
### Amenities

- WiFi
- 24-hour security
- All-inclusive bills
- Entertainment facilities
- Laundry services
- CCTV surveillance

### Nearby Universities

**University College London (UCL):** 15 minutes via tube  
**London School of Economics (LSE):** 20 minutes via tube  
**City, University of London:** 25 minutes via tube  
**SOAS University of London:** 15 minutes via bus





**Address** : 13 Hawley Crescent, Camden, London, NW1 8NP, United Kingdom  
**Nearest Tube Station** : Camden Town (Northern Line)  
**Nearest Train Line** : Camden Road - Overground

## Nearby Attractions & Key Locations

**Camden Market:** A world-famous market offering a wide variety of food stalls, vintage shops, and unique finds, just a 5-minute walk away.

**Regent's Canal:** A scenic waterway perfect for walks, cycling, or a boat trip, located 10 minutes from the residence.

**The Roundhouse:** A historic performing arts venue hosting live music, theatre, and other cultural events, located 5 minutes away.

**Primrose Hill:** A beautiful park offering one of the best views of the London skyline, just a 15-minute walk away.

**London Zoo:** It is located within Regent's Park, a 20-minute walk from the residence, and is ideal for a day out with friends.

## Room Options

**Bronze Studio:** A 21m<sup>2</sup> studio with a 4ft double bed, providing a private and functional living space.

**Silver Studio:** A 27m<sup>2</sup> studio featuring a 4ft double bed, offering extra space for comfort and study.



## HOME FOR STUDENTS - LANDALE HOUSE

Situated in Zone 2, Landale House provides students convenience and comfort. The residence offers various room types, including en-suite options and studios, with easy access to local amenities and transport links.

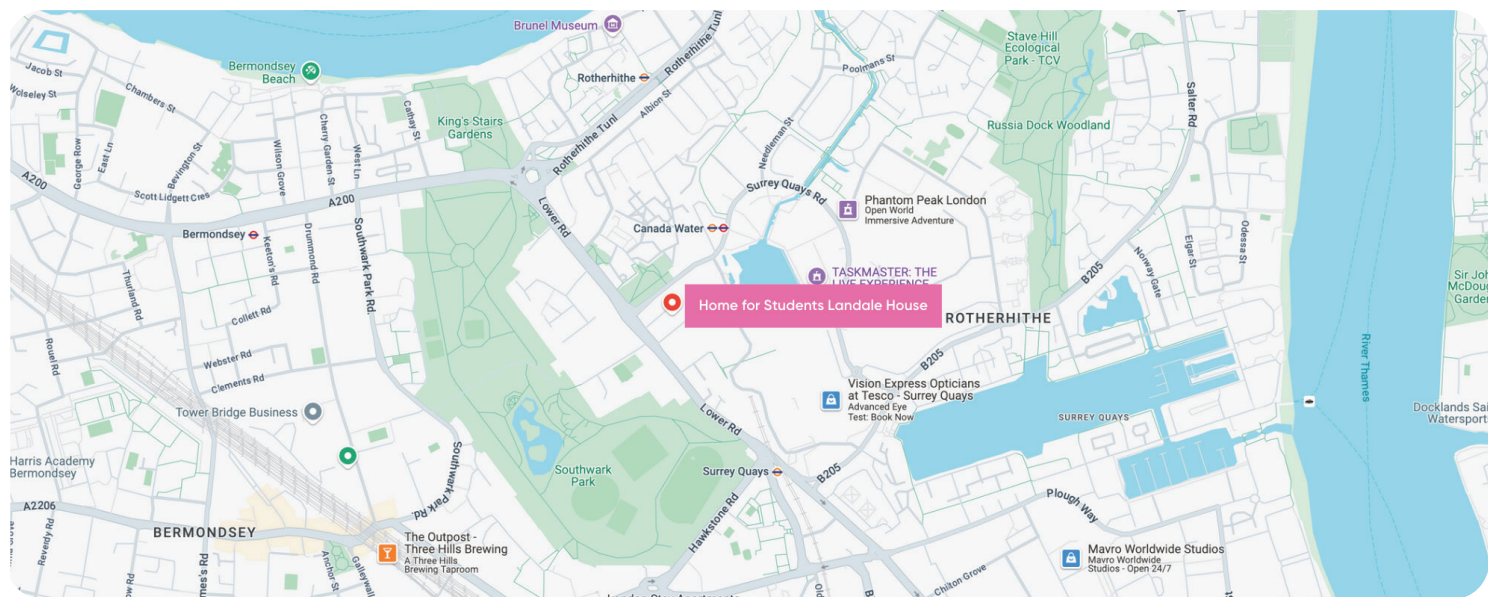
The proximity to local parks and cultural sites enhances its appeal, making it a perfect choice for students seeking a well-connected yet peaceful environment.

### Amenities

- WiFi
- 24-hour security
- All-inclusive bills
- Entertainment facilities
- Laundry services
- CCTV surveillance

### Nearby Universities

**University College London (UCL):** 25 minutes via tube  
**London School of Economics (LSE):** 30 minutes via tube



**Address** : Landale House, Ardent Waterside, Lower Road, 101 Lower Rd, London SE16 2XG, United Kingdom

**Nearest Tube Station** : Canada Water (Jubilee Line)

**Nearest Train Line** : Surrey Quays - Overground

### Nearby Attractions & Key Locations

**Surrey Quays Shopping Centre:** 10-minute walk – A shopping destination offering various stores, cafes, and entertainment options.

**Southwark Park:** 15-minute walk – A large park perfect for relaxation, sports, and community events.

**Greenwich:** 20 minutes via tube – A historic area known for its maritime history, markets, and the famous Greenwich Park.

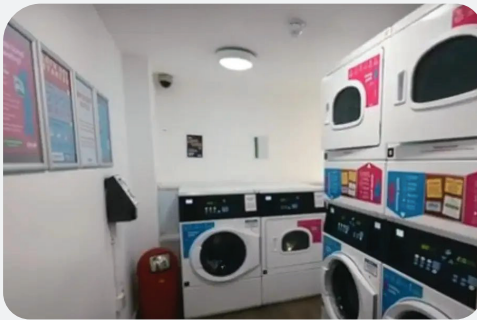
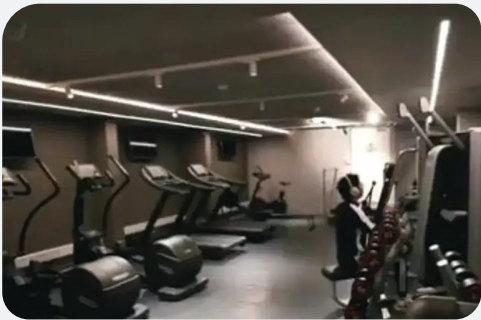
**The O2 Arena:** 20 minutes via tube – A major entertainment venue hosting concerts, events, and exhibitions.

### Room Options

**Silver Non-En-Suite Room:** A practical 15m<sup>2</sup> room featuring a 4ft double bed and shared bathroom facilities, ideal for budget-conscious students.

**Silver Non-En-Suite Plus Room:** A 20m<sup>2</sup> room offering a 4ft double bed and shared bathroom facilities, providing additional space and comfort.

**Silver Premium Non-En-Suite Room:** A spacious 25m<sup>2</sup> room with a 4ft double bed and shared bathroom facilities, offering a more premium living experience.



## **IQ KINGSTON RESIDENCE**

Located in Zone 6, iQ Kingston provides students with a comfortable and well-connected living space. The residence offers various room types, including en-suite rooms and studios, ensuring options that suit different preferences.

Its proximity to Kingston University and the town centre provides easy access to educational facilities, shopping, and leisure activities.

### **Amenities**

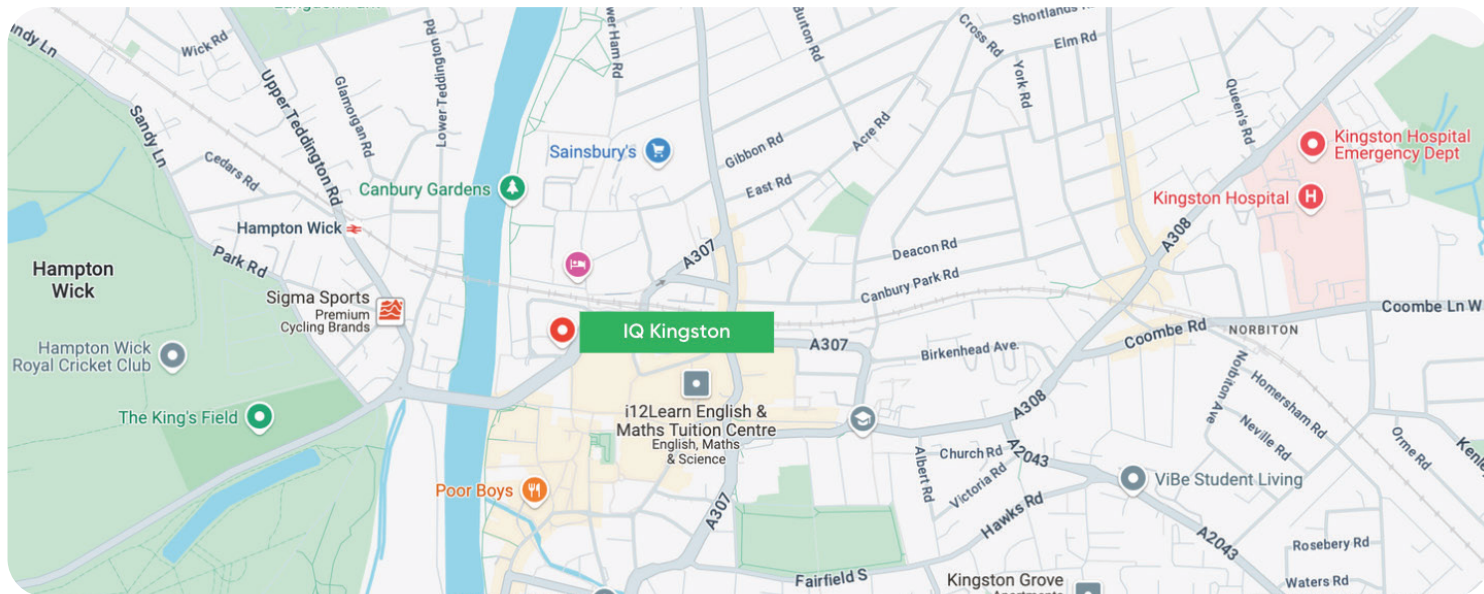
- WiFi
- 24-hour security
- All-inclusive bills
- Entertainment facilities
- Laundry services
- CCTV surveillance

### **Nearby Universities**

**Kingston University:** 10-minute walk

**St. George's University of London:** 15-minute drive

**Richmond, The American International University in London:** 20 minutes via public transport



**Address** : 15 Wood Street, Kingston upon Thames, Kingston KT1 1TY, UK  
**Nearest Tube Station** : N/A  
**Nearest Train Line** : Kingston – South Western Railway

### Nearby Attractions & Key Locations

**Kingston Town Centre:** A bustling shopping and dining area with various stores, cafes, and restaurants.

**The Bentall Centre:** A large shopping centre offering a range of retail options.

**Hampton Court Palace:** A historic royal palace with beautiful gardens about 3 miles away.

**Richmond Park:** A large, scenic park ideal for outdoor activities, just a short bus ride away.

### Room Options

**Bronze En-Suite:** A practical 16m<sup>2</sup> room with a 4ft double bed, study desk, and en-suite bathroom, ideal for a balanced and private living environment.

**Bronze Studio Plus:** A 22m<sup>2</sup> studio with a 4ft double bed, providing a compact yet comfortable space for independent living.

**Silver En-Suite:** A 28m<sup>2</sup> studio offering more space with a 4ft double bed, including a study area and kitchenette for added convenience.

**Gold En-Suite:** A spacious 35m<sup>2</sup> studio with a 4ft double bed featuring a larger living area and upgraded amenities for a more comfortable stay.

**Silver Studio Plus:** A larger 30m<sup>2</sup> studio featuring a 4ft double bed, enhanced study area, and additional living space for extra comfort and functionality.



## IQ PARIS GARDENS RESIDENCE

Situated in Zone 1, iQ Paris Gardens offers students a central London living experience, blending modern facilities with excellent accessibility.

The residence provides a variety of en-suite rooms and studios, making it ideal for students seeking comfort and convenience. Located near the South Bank, students easily access cultural landmarks, dining, and entertainment options. The well-connected transport links ensure quick commutes to nearby universities.

### Amenities

- WiFi
- 24-hour security
- All-inclusive bills
- Gym
- Laundry facilities
- Study areas
- Social spaces
- CCTV surveillance

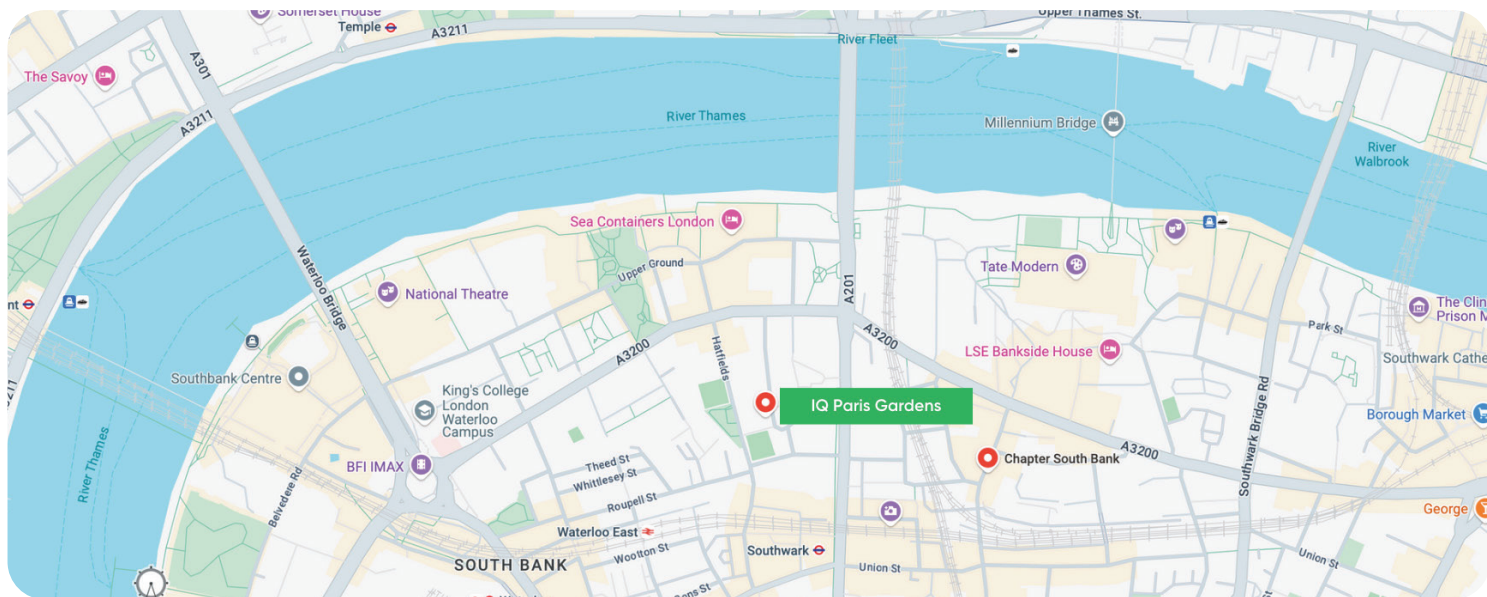
### Nearby Universities

**King's College London:** 10-minute walk

**London School of Economics (LSE):** 15-minute walk

**University of the Arts London (UAL):** 20 minutes by tube

**University College London (UCL):** 25 minutes by tube



**Address** : 6 Paris Garden, London SE1 8ND  
**Nearest Tube Station** : Old Street (Northern Line)  
**Nearest Train Line** : Shoreditch High Street - Overground

### Nearby Attractions & Key Locations

**South Bank:** 5-minute walk home to cultural landmarks like the Tate Modern, National Theatre, and the Southbank Centre, offering a variety of art, theatre, and music.

**Waterloo Bridge:** 7-minute walk, providing stunning views of the Thames, the London Eye, and the Houses of Parliament.

**The Shard:** 15-minute walk, Western Europe’s tallest building, offering breathtaking city views.

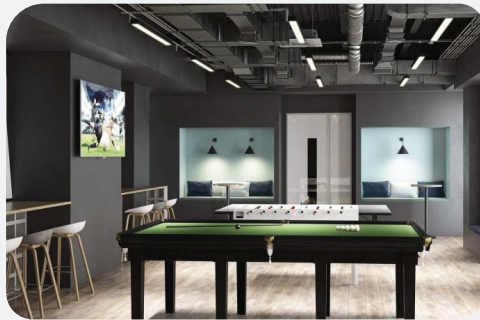
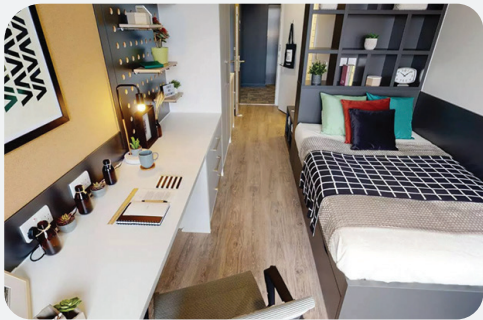
**Borough Market:** 15-minute walk, one of London's most renowned food markets, famous for its artisanal produce and street food.

**London Eye:** 12-minute walk, an iconic Ferris wheel offering panoramic city views.

### Room Options

**Bronze Studio 2 Bed Apartment Plus:** A 12-14m<sup>2</sup> room with a private bathroom, 3/4 bed, and study area.

**Silver Studio 2 Bed Apartment Plus:** A 17-19m<sup>2</sup> studio featuring a private bathroom, 3/4 bed, kitchenette, study space, WiFi, laundry access, and gym access.



## IQ SHOREDITCH RESIDENCE

Located in the heart of London's creative and tech hub, iQ Shoreditch offers students a well-connected and modern living experience. This residence provides a range of en-suite rooms and studios, ideal for students who prioritise both location and comfort.

Located near Old Street and Shoreditch High Street, residents can easily access various shops, cafes, and cultural hotspots. The excellent transport links make commuting to nearby universities convenient.

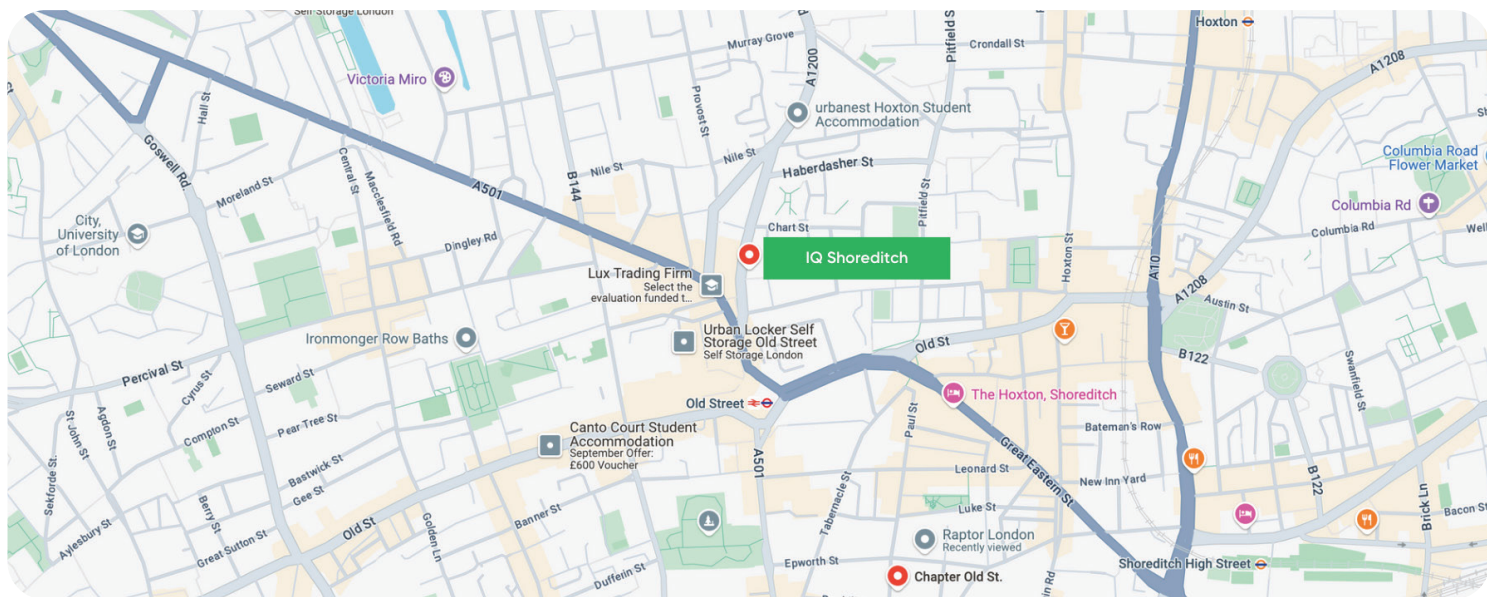
### Amenities

- WiFi
- 24-hour security
- All-inclusive bills
- Gym
- Laundry facilities
- Study areas
- Social spaces
- CCTV surveillance

### Nearby Universities

- City, University of London:** 20-minute walk
- University College London (UCL):** 18 minutes by tube
- London Metropolitan University:** 20 minutes by bus
- King's College London:** 25 minutes by tube





**Address** : 2 Silicon Way, London, N1 6AT  
**Nearest Tube Station** : Old Street (Northern Line)  
**Nearest Train Line** : Shoreditch High Street - Overground

## Nearby Attractions & Key Locations

**Shoreditch:** 10-minute walk, known for its vibrant nightlife, street art, and eclectic mix of shops and eateries.

**Old Street Roundabout:** 5-minute walk, a major tech hub often referred to as "Silicon Roundabout."

**Brick Lane:** 15-minute walk, famous for its markets, street food, and cultural diversity.

## Room Options

**Bronze Studio:** 17-19m<sup>2</sup> studio offering privacy and comfort with a private bathroom, 3/4 bed, WiFi, laundry access, gym access, and wheelchair accessibility.

**Bronze Studio Plus:** A 17-19m<sup>2</sup> studio featuring a private bathroom, 3/4 bed, WiFi, laundry access, gym access, and wheelchair accessibility.

**Silver Studio:** 17m<sup>2</sup> studio with a private bathroom, 3/4 bed, kitchenette, and study space.



## **IQ STERLING COURT RESIDENCE**

Located in Zone 4, iQ Sterling Court offers students a blend of city living and comfort. This modern residence provides a variety of en-suite rooms and studio flats designed to meet the needs of students seeking both convenience and comfort.

Located near Wembley Park, residents can easily access shopping, entertainment, and cultural venues. Excellent transport links ensure a straightforward commute to nearby universities and central London.

### **Amenities**

- WiFi
- 24-hour security
- All-inclusive bills
- Entertainment facilities
- Laundry services
- CCTV surveillance

### **Nearby Universities**

- University of Westminster:** 25 minutes via tube
- University College London (UCL):** 30 minutes via tube
- London School of Economics (LSE):** 35 minutes via tube
- King's College London (KCL):** 35 minutes via tube



**Address** : 6 Lakeside Way, Wembley Park, Wembley HA9 0BU, United Kingdom  
**Nearest Tube Station** : Wembley Park (Jubilee and Metropolitan Lines)  
**Nearest Train Line** : Wembley Stadium – Chiltern Railways

### Nearby Attractions & Key Locations

**Wembley Stadium:** 5-minute walk – A world-famous sports and entertainment venue.

**London Designer Outlet:** 5-minute walk – A shopping centre with various retail outlets, restaurants, and entertainment options.

**Boxpark Wembley:** 5-minute walk – A popular destination offering street food, events, and entertainment.

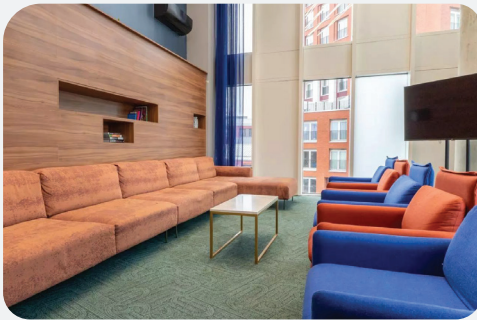
**Wembley Arena:** 5-minute walk – A significant entertainment venue hosting concerts and events.

**King Edward VII Park:** 10-minute walk – A local park offering green space for relaxation and outdoor activities

### Room Options

**Bronze En-Suite Premium:** 12-13m<sup>2</sup>, private bathroom, 3/4 bed, study area.

**Bronze Studio Deluxe:** 18-19m<sup>2</sup>, private bathroom, 3/4 bed, kitchenette, study space.



## IQ VEGA RESIDENCE

Located in the vibrant community of Vauxhall, iQ Vega offers students a trendy and dynamic environment with stunning views of London. The residence is just a short walk from the River Thames and the Thames Path National Trail, providing both serenity and city buzz.

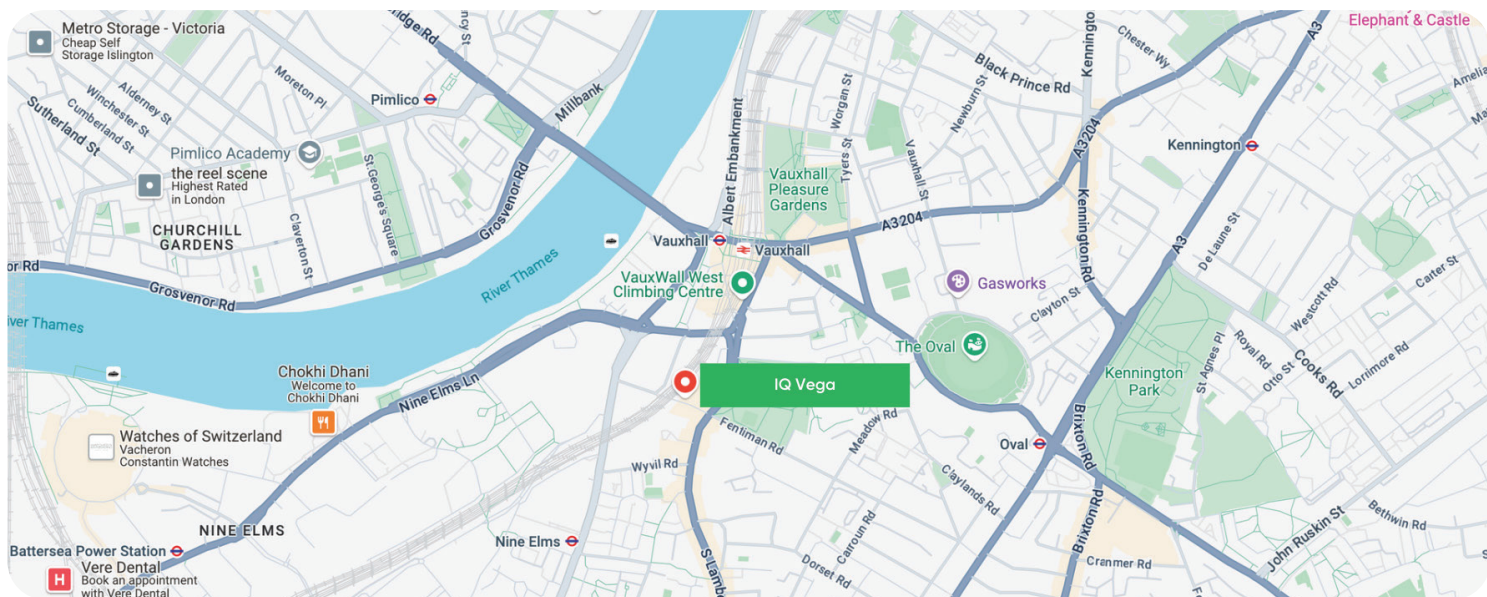
Residents can enjoy a variety of social and study spaces, including a sky lounge with panoramic views of the capital. The area is known for its easy access to central London and nearby universities.

### Amenities

- WiFi
- All-inclusive bills
- Laundry
- CCTV surveillance
- Bike storage
- Gym
- Study space
- Games room
- Cinema

### Nearby Universities

**Chelsea College of Arts:** 18-minute walk  
**King's College London (Waterloo Campus):** 17-minute bus ride  
**UCL:** 23 minutes via tube



**Address** : 6 Miles Street, Vauxhall, London SW8 1RZ, United Kingdom  
**Nearest Tube Station** : Vauxhall Station (Victoria Line)

### Nearby Attractions & Key Locations

**Thames Path National Trail:** A scenic walking path along the River Thames, perfect for relaxation and leisure.

**Vauxhall City Farm:** Just a 10-minute walk, offering a touch of nature with various animals.

**Vauxhall Comedy Club:** A popular spot for live comedy shows, ideal for unwinding.

**St George's Wharf:** A lively area with numerous bars and restaurants, embodying London city life.

### Room Options

**Bronze Studio:** 15m<sup>2</sup> studio on floors 1-8, featuring a double bed, modern kitchen, and private amenities.

**Silver En-Suite:** A private en suite room in a shared apartment offers a personal shower room and access to communal living spaces.

**Silver En-Suite Plus:** An upgraded en suite with more spacious accommodations within a shared apartment.



## LONDONIST - FINSBURY HOUSE RESIDENCE

Finsbury House is strategically located in North London's dynamic area of Green Lanes, offering students a convenient and comfortable living experience. The residence boasts modern en-suite rooms and studio flats thoughtfully designed to meet students' needs.

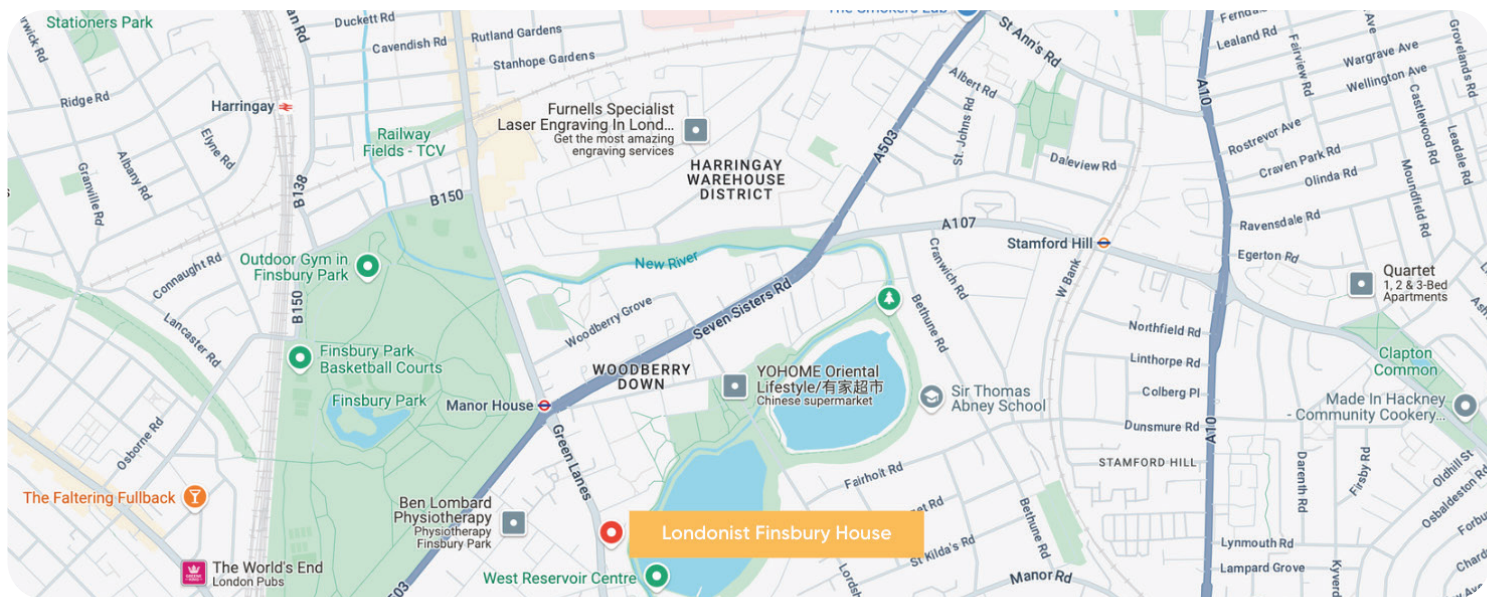
With a lively neighbourhood filled with diverse restaurants, cafes, and shops and excellent transport links, students can easily access central London, nearby universities, and other key locations.

### Amenities

- WiFi
- 24-hour security
- All-inclusive bills
- Common room
- Laundry facilities
- CCTV surveillance

### Nearby Universities

- City, University of London:** 25 minutes by tube
- University College London (UCL):** 20 minutes by tube
- London Metropolitan University:** 15 minutes by tube
- University of the Arts London (UAL):** 30 minutes by tube
- Middlesex University:** 30 minutes by tube



**Address** : 323 Green Lanes, London N4 2ES, UK  
**Nearest Tube Station** : Manor House (Piccadilly Line)  
**Nearest Train Line** : Haringay Green Lanes (London Overground)

## Nearby Attractions & Key Locations

**Finsbury Park:** 10-minute walk – A large urban park offering open spaces, sports facilities, and a boating lake.

**Clissold Park:** 15-minute walk – A popular park with a café, animal enclosures, and a beautiful pond.

**Alexandra Palace:** 30 minutes by public transport – A historic entertainment venue offering panoramic views of London.

**Emirates Stadium:** 20 minutes by tube – The iconic home of Arsenal Football Club.

## Room Options

**Classic Studio:** Private bathroom, single bed, kitchenette, and study area.

**Classic En-Suite:** Private bathroom, single bed, study area, and shared kitchen.

**Premium En-Suite:** Larger private bathroom, single bed, study area, and shared kitchen.

**Premium En-Suite Plus:** Spacious en-suite with a single bed, study area, and shared kitchen.

**Premium Studio:** Double bed, private bathroom, kitchenette, and dedicated study space.



## LONDONIST - WEST GREEN HOUSE

West Green House is located in Tottenham, North London, just a 15-minute walk from Seven Sisters and South Tottenham underground stations.

The Victoria Line offers a quick connection to the city centre in under 15 minutes. London Stansted Airport is less than an hour away, making it ideal for short trips or holidays back home. For relaxation, Lee Valley is nearby, offering a perfect spot to read in the sun or enjoy a picnic with friends.

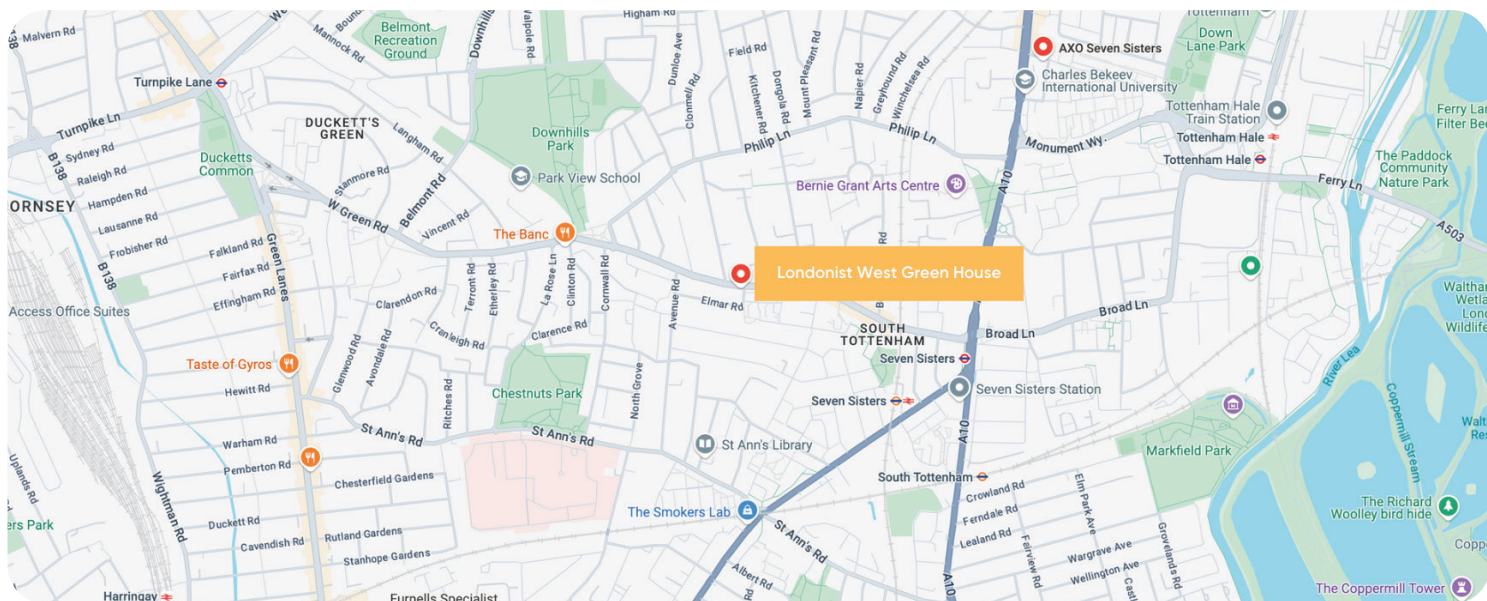
### Amenities

- WiFi
- All-inclusive bills
- Laundry
- CCTV surveillance

### Nearby Universities

- London International University:** 0.2 miles
- City of London Business College:** 0.5 miles
- Birkbeck University:** 30 minutes via tube
- London Metropolitan University:** 25 minutes via tube
- University College London (UCL):** 30 minutes via tube
- BPP University:** 35 minutes via tube
- King's College London:** 40 minutes via tube





**Address** : 151 West Green Road, Tottenham, London N15 5EA  
**Nearest Tube Station** : Seven Sisters and Turnpike Lane Stations  
 (Victoria Line and Piccadilly Line)

## Nearby Attractions & Key Locations

**Lee Valley:** 0.7 miles, a beautiful park area for relaxation and outdoor activities.

**Tottenham Green Leisure Centre:** 0.4 miles, offering a gym, swimming pool, and various sports facilities.

**Tottenham Hotspur Stadium:** 1.5 miles, the home of Tottenham Hotspur Football Club, also hosting concerts and events.

**Downhills Park:** 0.8 miles, a serene park with a café, tennis courts, and playground.

**Bruce Castle Museum:** 1.6 miles, a Grade I listed 16th-century manor house housing a local history museum.

## Room Options

**Classic En-Suite:** A cosy 12m<sup>2</sup> room with a private bathroom, bed, desk, and personal storage.

**Classic En-Suite 3:** Similar to the Classic En-suite with shared kitchen access, 12m<sup>2</sup> in size.

**Premium En-Suite:** A more spacious 15m<sup>2</sup> room with a larger bed, private bathroom, and shared kitchen access.

**Premium En-Suite Plus:** The largest option at 17m<sup>2</sup>, featuring a large bed, private bathroom, and shared kitchen access.



## MEZZINO - HACKNEY WICK PARK

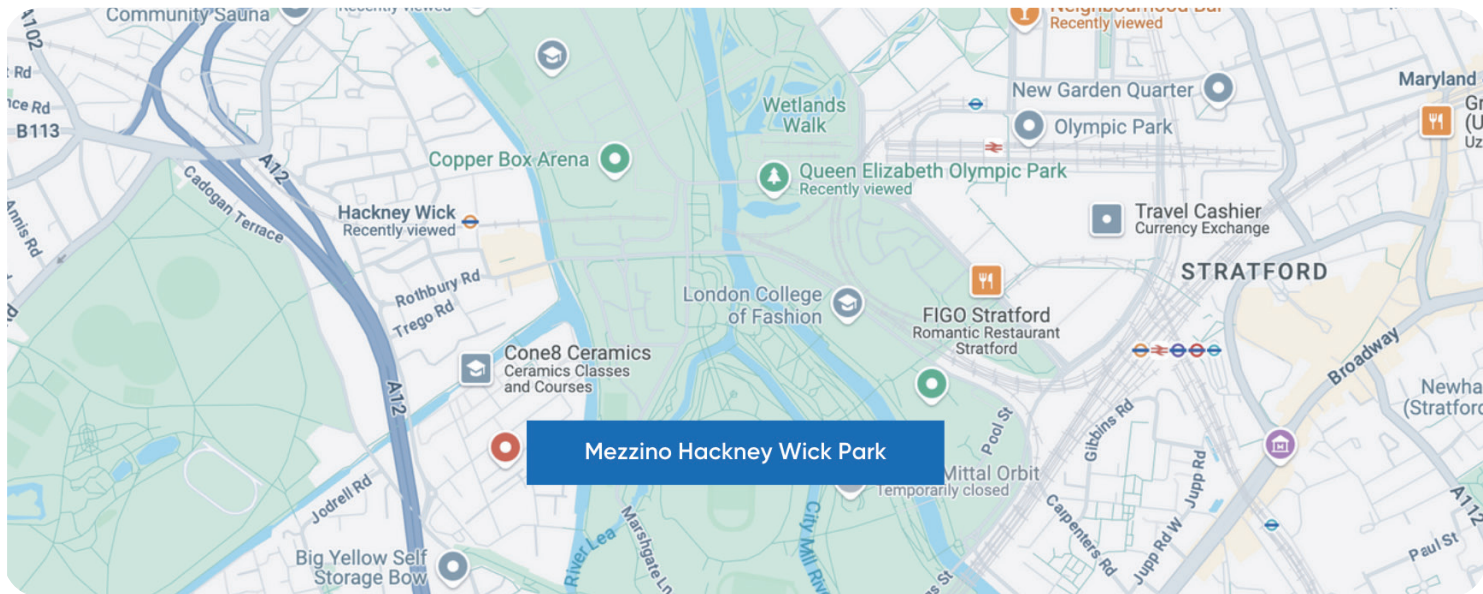
Hackney Wick Park is more than just a place to live and study; it embodies the creative energy of the Hackney Wick area, giving the residence its unique character. This residence offers a diverse range of beautifully designed rooms and self-contained studios, each exuding luxury and modernity. Hackney Wick Park provides everything you need whether you're seeking a vibrant social atmosphere or a peaceful private retreat. The location allows residents to fully embrace the spirit of Hackney Wick while enjoying exceptional amenities and accommodations.

### Amenities

- WiFi
- All-inclusive bills
- Laundry
- CCTV surveillance
- Amphitheatre
- Breakfast Bar & Lounge

### Nearby Universities

- London College of Fashion:** 0.7 miles
- Staffordshire University London:** 0.7 miles
- LMA London:** 15-minute walk
- Loughborough University London:** 17-minute walk
- Bayes Business School:** 35 minutes via tube
- UCL East Campus:** 17-minute walk
- London Guildhall College:** 10-minute walk



**Address** : 1 Stour Rd, Bow, London E3 2EQ  
**Nearest Tube Station** : Hackney Wick Station (London Overground)

### Nearby Attractions & Key Locations

**Queen Elizabeth Olympic Park:** 0.9 miles, a significant park and sports complex offering a variety of recreational activities and events.

**Westfield Stratford City:** 1.3 miles, one of the largest urban shopping centres in Europe, featuring a wide range of shops, dining, and entertainment options.

**Victoria Park:** 1.5 miles, a large and historic park known for its scenic beauty, boating lake, and various events.

**Hackney Wick:** 0.6 miles away, a vibrant area known for street art, creative spaces, and lively cafes and bars.

**The Copper Box Arena:** 1.2 miles, a multi-sport venue in the Queen Elizabeth Olympic Park, hosting various sports and fitness activities.

### Room Options

**Standard En Suite (10 Bed Cluster):** The private en-suite bedroom in our shared apartments features a cosy small double bed, a dedicated study area, generous storage options, and a personal bathroom.



## PRESTIGE – PADDINGTON CITI VIEW

Experience the height of luxury student living in the heart of London Paddington, just a minute's walk from Paddington train station and the Tube. With the lively Paddington Basin nearby, this residence offers easy access to some of London's top destinations like Marylebone and Oxford Street.

The Paddington Express and Elizabeth Line are only a 5-minute walk away, ensuring you're well-connected to the rest of the city.

### Amenities

- WiFi
- All-inclusive bills
- Laundry
- CCTV surveillance
- Bike Storage
- Gym
- Study Space

### Nearby Universities

**Paddington College:** 0.3 miles

**University of London:** 0.1 miles

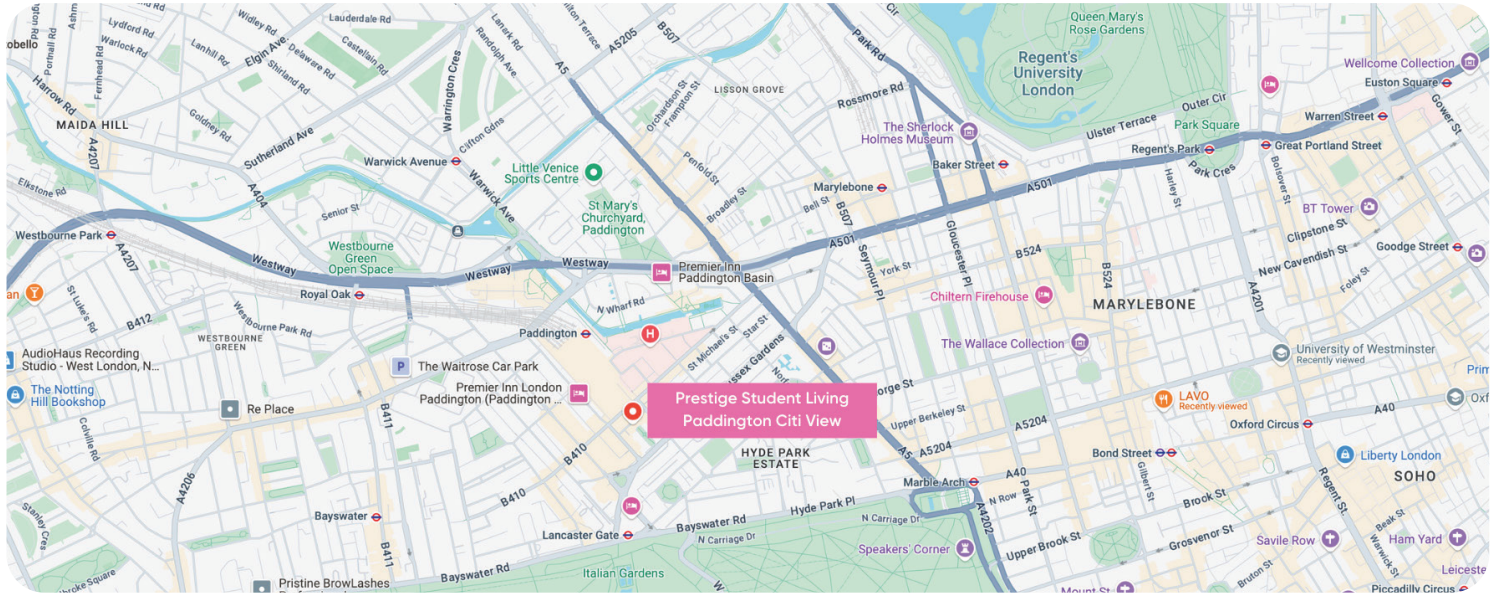
**University of Westminster's Regent Campus:** 15-minute tube ride

**University of Westminster's Marylebone Campus:** 12 minutes via tube

**University College London:** 23-minute tube ride

**Kings College London's Strand Campus:** 30-minute tube journey

**The City of Westminster College:** 13-minute walk



**Address** : 15-25 Talbot Square, Tyburnia, London W2 1TT  
**Nearest Tube Station** : Paddington Station (Bakerloo, Circle, and District Lines)

**Nearby Attractions & Key Locations**

**Hyde Park:** 0.5 miles, one of London’s largest parks, offering open green spaces, walking paths, and the Serpentine Lake.

**Paddington Basin:** 0.4 miles, a vibrant area with canalside restaurants, cafes, and bars, perfect for leisure and relaxation.

**Oxford Street:** 1 mile, London’s famous shopping street with many retail stores and boutiques.

**Little Venice:** 0.7 miles, a picturesque network of canals offering boat rides, cafes, and scenic walks.

**The Sherlock Holmes Museum:** This 1.2-mile museum is dedicated to the famous fictional detective and is located at 221B Baker Street.

**Room Options**

**Bronze Studio:** Each Bronze studio features a 3/4 double bed and in-room air conditioning, allowing you to maintain your ideal comfort level.

**Silver Studio:** A cosy 12-17 m<sup>2</sup> room with a private bathroom, bed, desk, and personal storage.



## TRIBE – SOUTH BERMONDSEY

YourTribe South Bermondsey is more than just a place to stay; it's a dynamic environment where community thrives. The spaces are designed to balance study and relaxation seamlessly, giving students a perfect environment to excel and unwind.

Located in a spirited neighbourhood known for its diverse architecture, street food, and welcoming pubs, South Bermondsey offers easy access to central London, making it an ideal home for students.

### Amenities

- WiFi
- All-inclusive bills
- Laundry
- CCTV surveillance
- Social Spaces
- Cinema
- Games Room

### Nearby Universities

**Goldsmiths, University of London:** 23-minute walk or 12 minutes via train

**King's College London (Guy's Campus):** 25 minutes by train

**London South Bank University:** 28 minutes by train

**London College of Communication:** 30 minutes by train



**Address** : 349 Ilderton Rd, London SE15 1NW  
**Nearest Tube Station** : Bermondsey (Jubilee Line)  
**Nearest Train Line** : Queen Road Peckham - Overground

### Nearby Attractions & Key Locations

**Bermondsey Street:** 1.5 miles, known for its trendy cafes, restaurants, and art galleries.

**Southwark Park:** 1 mile, a large park offering green spaces, sports facilities, and a cafe.

**Maltby Street Market:** 1.4 miles away, a vibrant street market famous for its food stalls and unique finds.

### Room Options

**Classic En-Suite:** A design-focused space with a luxurious en-suite bathroom and essential amenities for comfortable student living.

**Classic Studio:** Offers a luxury en-suite bathroom and fully equipped kitchenette, perfect for a well-rounded student life.

**Premium Studio:** This studio provides a premium living experience with a luxury en-suite, a fully equipped kitchenette, and complimentary cleaning twice a month.

**Prestige En-Suite:** A prestigious space with all the features of classic and premium rooms, enhanced with additional services.

**Superior En-Suite:** A spacious room on higher floors offers a superior living experience.

**Ultimate En-Suite:** A luxurious and spacious en-suite room, perfect for students who seek the best of London student life, complete with a complimentary coffee machine and weekly pods.



## UNITE STUDENTS - DRAPERY PLACE

Drapery Place (formerly Drapery Plaza) is ideally situated to help you make the most of student life in London, with many of the city's universities just a short ride away by public transport. Within Drapery Place, you'll find cosy common areas with activities like pool and foosball, quiet study spaces, and modern amenities, including a gym and bike storage. The vibrant neighbourhoods of Shoreditch and Spitalfields are less than a mile away, offering unique shopping and dining experiences at Brick Lane and Old Spitalfields Market.

### Amenities

- WiFi
- All-inclusive bills
- Laundry
- CCTV surveillance
- Social Spaces
- Gym
- Bike Storage

### Nearby Universities

**Queen Mary University of London (QMUL), Mile End Campus:**

16 minutes via tube

**The University of London, Northampton Square Campus:**

27 minutes via tube

**London Metropolitan University, Aldgate Campus:** 10-minute walk

**Kaplan International English:** 28 minutes via tube





**Address** : 65 Lemau St, London E1 8EU  
**Nearest Tube Station** : Aldgate East Station (District, Hammersmith & City Lines)

## Nearby Attractions & Key Locations

**Brick Lane:** 0.7 miles, famous for its markets, street art, and diverse food stalls.

**Tower of London:** 1 mile, a historic castle and a UNESCO World Heritage Site.

**The Whitechapel Gallery:** 0.4 miles, an internationally renowned art gallery.

**Old Spitalfields Market:** 0.6 miles, offering a mix of independent shops, food vendors, and events.

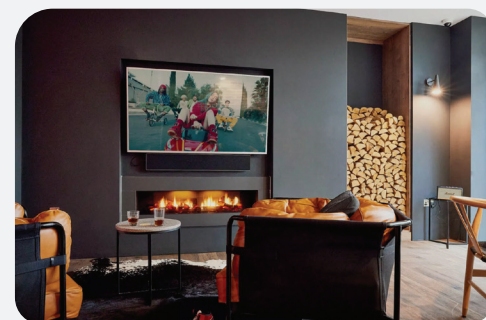
**Shoreditch High Street:** 0.8 miles, known for its vibrant nightlife, shops, and eateries.

## Room Options

**Classic Studio:** This 16-m<sup>2</sup> features a private kitchen and bathroom, ensuring a comfortable and convenient student living experience.

**Premium Range 1 En-Suite:** 14.5m<sup>2</sup>, offers the privacy of your bathroom with the social benefits of a shared kitchen.

**Premium Range 2 Twin Studio:** 27.5m<sup>2</sup>, includes a private kitchen and bathroom, providing extra comfort and space for student living.



## VITA STUDENTS – LEWISHAM EXCHANGE

Soaring 35 stories above the city, Lewisham Exchange redefines student living with breathtaking views, inspiring study and social areas, and exceptional amenities.

Enjoy a fully equipped gym, expansive study spaces, private dining rooms, and chic lounges where you can savour complimentary weekday breakfast. This is student accommodation at its finest, offering both luxury and convenience.

### Amenities

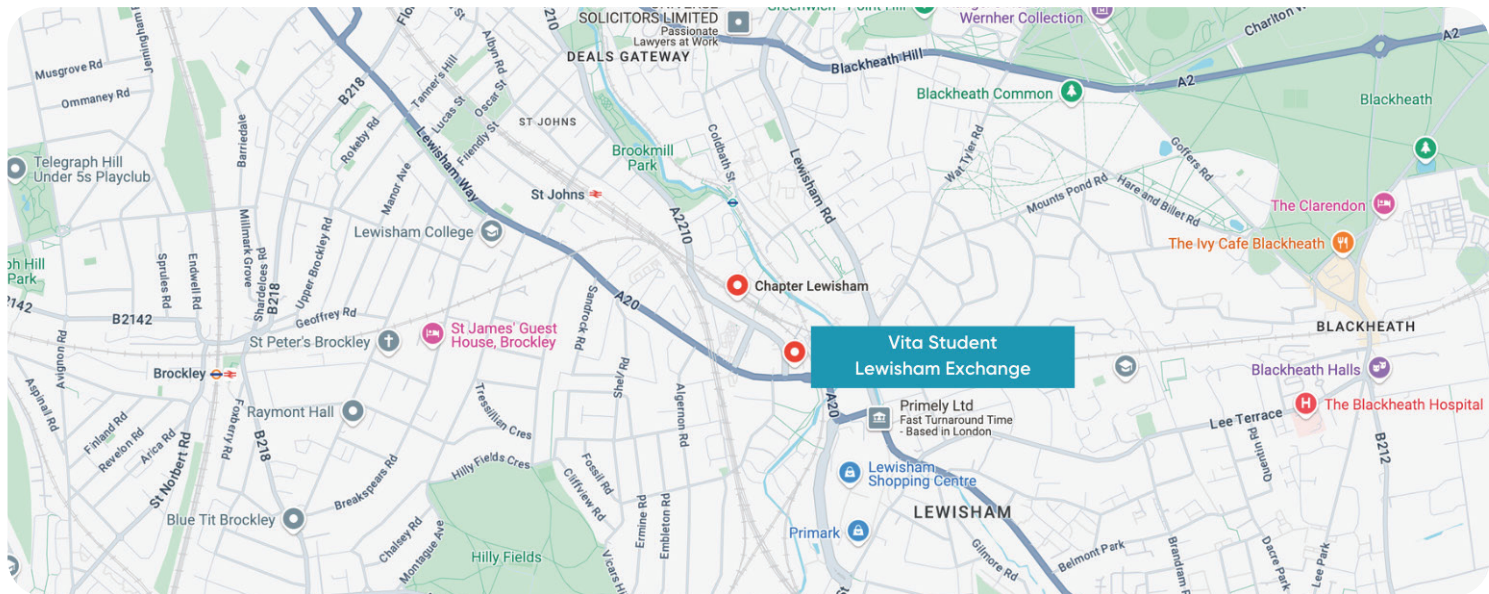
- WiFi
- All-inclusive bills
- Laundry
- CCTV surveillance
- Social Spaces
- Bike Storage
- Games Room
- Gym

### Nearby Universities

**Lewisham College:** 14-minute walk

**University of Greenwich:** 12 minutes by cycle

**Goldsmiths University:** 27 minutes via tube



**Address** : Exchange Point, Loampit Vale, London SE13 7NX, UK  
**Nearest Tube Station** : Lewisham Station (Bakerloo Line)

### Nearby Attractions & Key Locations

**Greenwich Park:** An ample green space offering panoramic views of London, just a short bus ride away.

**Cutty Sark:** An iconic British clipper ship in Greenwich, 20 minutes by public transport.

**Deptford Market Yard:** A trendy market with independent shops, cafes, and bars just a few minutes away.

**Lewisham Shopping Centre:** 5-minute walk; features a variety of shops, supermarkets, and dining options.

**The O2 Arena:** One of London’s most famous entertainment venues, just 15 minutes away by public transport.

### Room Options

**Classic Studio:** A well-designed 15m<sup>2</sup> studio offering everything you need in a compact, comfortable space.



## YUGO - THERESE HOUSE

Renovated in 2017, Therese House offers some of the finest student accommodation in London, featuring various beautifully designed studio rooms. Situated in Zone 1, central London, Therese House is just two minutes from Barbican tube station.

Despite being in the heart of the UK's largest city, you'll find all your necessities nearby, ensuring a comfortable and convenient student living experience.

### Amenities

- WiFi
- All-inclusive bills
- Laundry
- CCTV surveillance
- Cinema Room

### Nearby Universities

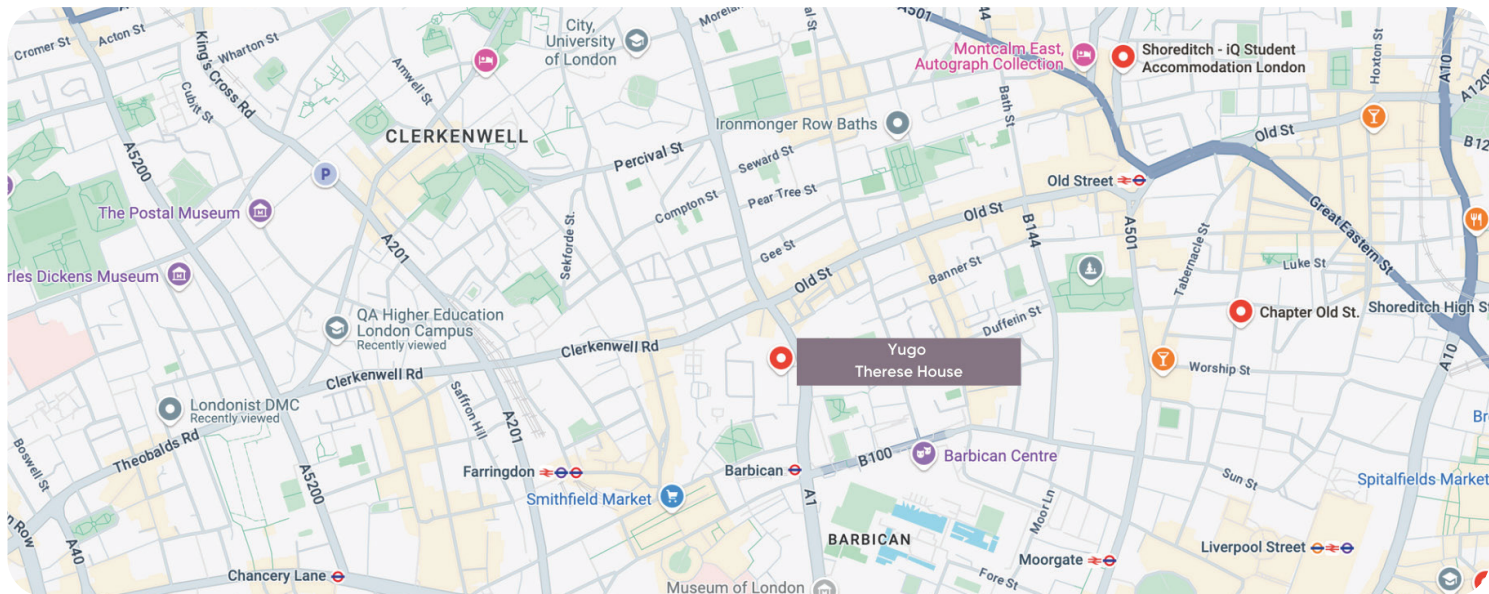
**City University:** 5 minutes walk

**SOAS University:** 20 minutes via tube

**Cass Business School:** 10 minutes walk

**Queen Mary University:** 20 minutes via tube

**King's College London:** 20 minutes via tube



**Address** : 29–30 Glasshouse Yard, Barbican, London EC1A 4JN, UK  
**Nearest Tube Station** : Barbican Tube Station (Circle, Hammersmith and City, and Metropolitan Lines)

## Nearby Attractions & Key Locations

**Barbican Centre:** 0.2 miles, a major performing arts centre known for music, theatre, film, and art exhibitions.

**Smithfield Market:** 0.4 miles, one of the largest wholesale meat markets in Europe, with a history of over 800 years.

**Museum of London:** 0.3 miles, a museum dedicated to the history of London from prehistoric to modern times.

**St. Paul's Cathedral:** 0.6 miles. This iconic London landmark has a stunning dome and offers panoramic city views.

**The Old Red Cow:** 0.3 miles, a traditional pub with a wide selection of craft beers, perfect for relaxing after a day of study.

## Room Options

**Standard Studio:** These studios offer all the great features of the Classic Studio plus a bit more space, ranging from 15 to 16.5 m<sup>2</sup>, making them ideal for students looking for a balance of comfort and functionality.





# londonist

DMC

## London, UK Headquarters

**Address:**

5 Great James Street Holborn,  
WC1N 3DB  
London / United Kingdom

**Phone:**

+44 20 7287 1912

**E-mail:**

book@londonist.co.uk

## Istanbul, Turkiye Office

**Address:**

Windowist Tower, Eski Büyükdere  
cad. No/26, Kat:19, Daire: 26,  
Maslak, Sarıyer Istanbul / Türkiye

**Phone:**

+90 212 214 77 20

**E-mail:**

turkiye@londonist.co.uk

## Shanghai, China Office

**Address:**

29/F, Shanghai Tower, No. 501  
Middle Yincheng Road, Lujiazui,  
200120 Shanghai / China

**Phone:**

+8615921892390

**E-mail:**

china@londonist.co.uk